

PPAR gamma antibody

Cat. No. GTX30762

| | |
|--------------|------------|
| Host | Chicken |
| Clonality | Polyclonal |
| Isotype | IgY |
| Applications | WB |
| Reactivity | Human |

Package
100 µl

Applications

Application Note

For WB: Use at a dilution of 1:2000-1:5000. Optimal dilutions/concentrations should be determined by the end user.

| | |
|---------------|--|
| Calculated MW | 58 kDa. (Note) |
| Product Note | it should react with Human PPAR gamma isoform1 and isoform 2 |

Properties

| | |
|---------------|--|
| Form | Liquid |
| Buffer | PBS |
| Preservative | 0.02% Sodium azide |
| Storage | Store as concentrated solution. Centrifuge briefly prior to opening vial. For short-term storage (1-2 weeks), store at 4°C. For long-term storage, aliquot and store at -20°C or below. Avoid multiple freeze-thaw cycles. |
| Concentration | 0.5 mg/ml (Please refer to the vial label for the specific concentration.) |
| Immunogen | Synthetic peptide - amino acids (YYSEKTQLYNKPHEE) of human PPAR gamma |
| Purification | Purified IgY |
| Conjugation | Unconjugated |

Note

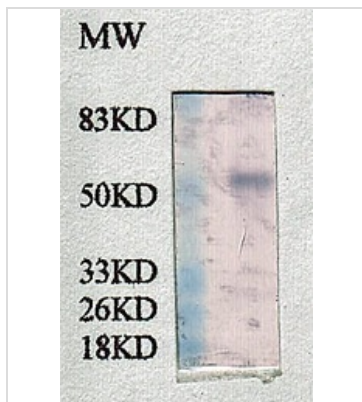
For laboratory research use only. Not for any clinical, therapeutic, or diagnostic use in humans or animals. Not for animal or human consumption.

Purchasers shall not, and agree not to enable third parties to, analyze, copy, reverse engineer or otherwise attempt to determine the structure or sequence of the product.



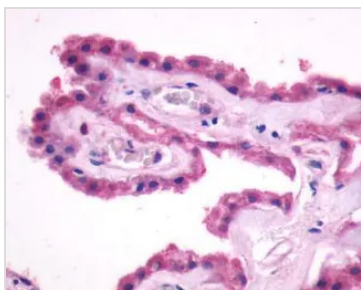
For full product information, images and publications, please visit our [website](#).

DATA IMAGES



GTX30762 WB Image

Western blot analysis of GTX30762 chicken anti PPAR gamma Ab (1:2000) on human adipose protein lysate (50ug)



GTX30762 WB Image



For full product information, images and publications, please visit our [website](#).