

# LKB1 (phospho Ser428) antibody

**Cat. No. GTX30765**

<b>Host</b>	Rabbit
<b>Clonality</b>	Polyclonal
<b>Isotype</b>	IgG
<b>Applications</b>	WB, IHC-P
<b>Reactivity</b>	Human, Mouse, Monkey

References ( 3 )

Package

50 µl

## Applications

### Application Note

\*Optimal dilutions/concentrations should be determined by the researcher.

Suggested dilution	Recommended dilution
WB	1:500 - 1:1000
IHC-P	1:50 - 1:100

Not tested in other applications.

**Calculated MW** 49 kDa. ( [Note](#) )

## Properties

<b>Form</b>	Liquid
<b>Buffer</b>	PBS, 150mM NaCl, 50% Glycerol
<b>Preservative</b>	0.02% Sodium azide
<b>Storage</b>	Store as concentrated solution. Centrifuge briefly prior to opening vial. For short-term storage (1-2 weeks), store at 4°C. For long-term storage, aliquot and store at -20°C or below. Avoid multiple freeze-thaw cycles.
<b>Concentration</b>	Batch dependent (Please refer to the vial label for the specific concentration.)
<b>Immunogen</b>	The antiserum was produced against synthesized phosphopeptide derived from human LKB1 around the phosphorylation site of serine 428 (R-L-Sp-A-C).
<b>Purification</b>	Purified by sequential chromatography on phospho- and non-phospho-peptide affinity columns. From serum
<b>Conjugation</b>	Unconjugated

### Note

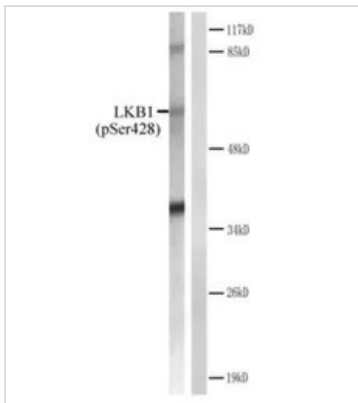
For laboratory research use only. Not for any clinical, therapeutic, or diagnostic use in humans or animals. Not for animal or human consumption.

Purchasers shall not, and agree not to enable third parties to, analyze, copy, reverse engineer or otherwise attempt to determine the structure or sequence of the product.



For full product information, images and publications, please visit our [website](#).

## DATA IMAGES

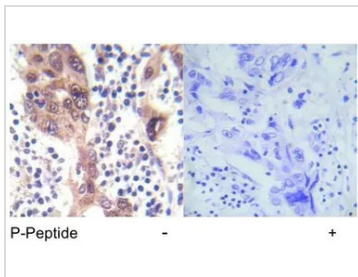


### GTX30765 WB Image

WB analysis of CV-1 cells treated with forskolin lysate using GTX30765 LKB1 (phospho Ser428) antibody.

Left : Primary antibody

Right : Primary antibody preincubated with immunogen peptide



### GTX30765 IHC-P Image

IHC-P analysis of human breast carcinoma tissue using GTX30765 LKB1 (phospho Ser428) antibody.



For full product information, images and publications, please visit our [website](https://www.genetex.com).