

## p53 (acetyl Lys373) antibody

**Cat. No. GTX30768**

|                     |            |
|---------------------|------------|
| <b>Host</b>         | Rabbit     |
| <b>Clonality</b>    | Polyclonal |
| <b>Isotype</b>      | IgG        |
| <b>Applications</b> | WB, IP     |
| <b>Reactivity</b>   | Human      |

**Package**

50 µl

### Applications

#### Application Note

\*Optimal dilutions/concentrations should be determined by the researcher.

| Suggested dilution | Recommended dilution |
|--------------------|----------------------|
| WB                 | 1:1000-1:5000        |
| IP                 | Assay dependent      |

Not tested in other applications.

**Calculated MW** 44 kDa. ( [Note](#) )

#### Product Note

Specific for human p53 acetylated in vitro by recombinant p300, and for peptide containing acetyllysine 373 but not for the peptide containing acetyllysine 320. Modest crossreactivity for p53 acetylated in vitro by recombinant PCAF.

### Properties

|                     |  |
|---------------------|--|
| <b>Form</b>         | Liquid   |
| <b>Buffer</b>       | Serum  |
| <b>Preservative</b> | 0.05% Sodium azide   |
| <b>Storage</b>      | Store as concentrated solution. Centrifuge briefly prior to opening vial. For short-term storage (1-2 weeks), store at 4°C. For long-term storage, aliquot and store at -20°C or below. Avoid multiple freeze-thaw cycles. |
| <b>Immunogen</b>    | KLH-conjugated, synthetic peptide corresponding to aa367-379 of human p53 (SHLKSK[AcK]GQSTSR, where AcK denotes acetyllysine). The specificity was demonstrated with synthetic acetylated peptides.                        |
| <b>Purification</b> | Unpurified   |
| <b>Conjugation</b>  | Unconjugated   |

#### Note

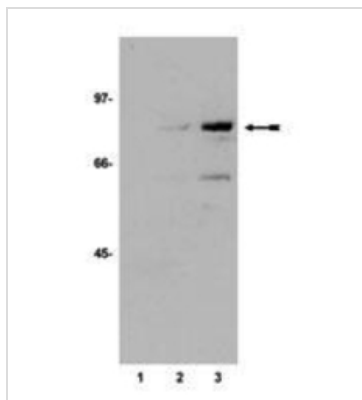
For laboratory research use only. Not for any clinical, therapeutic, or diagnostic use in humans or animals. Not for animal or human consumption.

Purchasers shall not, and agree not to enable third parties to, analyze, copy, reverse engineer or otherwise attempt to determine the structure or sequence of the product.



For full product information, images and publications, please visit our [website](#).

## DATA IMAGES



### GTX30768 WB Image

WB analysis of in vitro acetyl transferase reaction products using GTX30768 p53 (acetyl Lys373) antibody. Arrow indicates acetylated GST-p53.

Lane 1 : GST-p53 alone

Lane 2 : GST-p53 in the presence of PCAF

Lane 3: GST-p53 in the presence of p300

Dilution : 1:1000



For full product information, images and publications, please visit our [website](#).