

MFAP3L antibody, N-term

Cat. No. GTX30779

Host	Rabbit
Clonality	Polyclonal
Isotype	IgG
Applications	WB
Reactivity	Human

Package
100 µg

Applications

Application Note

*Optimal dilutions/concentrations should be determined by the researcher.

Suggested dilution	Recommended dilution
--------------------	----------------------

WB	0.2-2.5 ug/ml
----	---------------

Not tested in other applications.

Calculated MW	45 kDa. (Note)
----------------------	----------------------------------

Properties

Form	Liquid
-------------	--------

Buffer	PBS, 2% Sucrose
---------------	-----------------

Preservative	0.09% Sodium azide
---------------------	--------------------

Storage	Store as concentrated solution. Centrifuge briefly prior to opening vial. For short-term storage (1-2 weeks), store at 4°C. For long-term storage, aliquot and store at -20°C or below. Avoid multiple freeze-thaw cycles.
----------------	--

Concentration	0.5-1 mg/ml (Please refer to the vial label for the specific concentration.)
----------------------	--

Immunogen	A synthetic peptide corresponding to a N-terminal region of Human MFAP3L
------------------	--

Purification	Protein A purified
---------------------	--------------------

Conjugation	Unconjugated
--------------------	--------------

Note

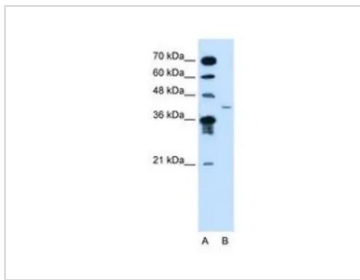
For laboratory research use only. Not for any clinical, therapeutic, or diagnostic use in humans or animals. Not for animal or human consumption.

Purchasers shall not, and agree not to enable third parties to, analyze, copy, reverse engineer or otherwise attempt to determine the structure or sequence of the product.



For full product information, images and publications, please visit our [website](#).

DATA IMAGES

**GTX30779 WB Image**

WB analysis of Jurkat cells using GTX30779 MFAP3L antibody at 2.5 μ g/ml.

Lane A : marker

Lane B : Jurkat cells



For full product information, images and publications, please visit our [website](#).