

PLCG1 antibody

Cat. No. GTX30787

Host	Rabbit
Clonality	Polyclonal
Isotype	IgG
Applications	WB, IP
Reactivity	Human, Mouse, Rat, Monkey

Package

50 µl

Applications

Application Note

*Optimal dilutions/concentrations should be determined by the researcher.

Suggested dilution	Recommended dilution
WB	1:1000
IP	1:50

Not tested in other applications.

Calculated MW	149 kDa. (Note)
Product Note	Does not crossreact with PLCgamma2.

Properties

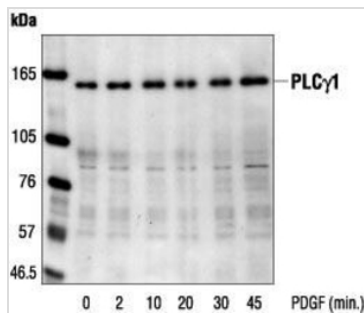
Form	Liquid
Buffer	10mM HEPES, 150mM NaCl, 0.01% BSA, 50% Glycerol
Preservative	No preservatives
Storage	Store as concentrated solution. Centrifuge briefly prior to opening vial. For short-term storage (1-2 weeks), store at 4°C. For long-term storage, aliquot and store at -20°C or below. Avoid multiple freeze-thaw cycles.
Concentration	Batch dependent (Please refer to the vial label for the specific concentration.)
Immunogen	Synthetic peptide corresponding to the C-terminal residues of human Phospholipase C, gamma 1 (PLCγ1).
Purification	Protein A purified
Conjugation	Unconjugated

Note

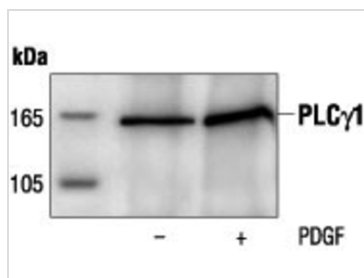
For laboratory research use only. Not for any clinical, therapeutic, or diagnostic use in humans or animals. Not for animal or human consumption.

Purchasers shall not, and agree not to enable third parties to, analyze, copy, reverse engineer or otherwise attempt to determine the structure or sequence of the product.

For full product information, images and publications, please visit our [website](#).

DATA IMAGES

GTX30787 WB Image

WB analysis of untreated or PDGF-stimulated NIH3T3 cell lysate using GTX30787 PLCG1 antibody.


GTX30787 IP Image

IP analysis of untreated or PDGF-stimulated NIH3T3 cell lysate using GTX30787 PLCG1 antibody.



For full product information, images and publications, please visit our [website](https://www.genetex.com).