

Goat Anti-Rabbit IgG antibody (DyLight680)

Cat. No. GTX30811

Host	Goat
Clonality	Polyclonal
Isotype	IgG
Application	WB, ICC/IF, IHC-Fr, FACS, IP
Reactivity	Rabbit

Package
1 ml

APPLICATION

Application Note

*Optimal dilutions/concentrations should be determined by the researcher.

Suggested dilution	Recommended dilution
WB	Assay dependent
ICC/IF	Assay dependent
IHC-Fr	Assay dependent
FACS	Assay dependent
IP	Assay dependent

Not tested in other applications.

Product Note

This antibody reacts with the heavy chains of rabbit IgG and with the light chains common to most rabbit immunoglobulins, but does not react against non-immunoglobulin serum proteins. However, this antibody may cross-react with immunoglobulins from other species.

PROPERTIES

Form	Liquid
Buffer	PBS, 1% BSA
Preservative	0.02% Sodium azide
Storage	Store as concentrated solution. Centrifuge briefly prior to opening vial. Store at 4°C. Protect from light.
Concentration	1 mg/ml (Please refer to the vial label for the specific concentration.)
Purification	Purified by antigen-affinity chromatography.
Conjugation	DyLight680



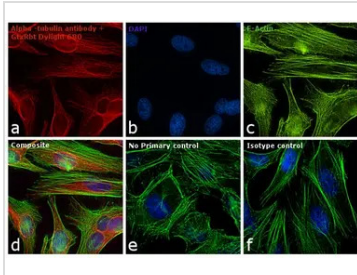
For full product information, images and publications, please visit our [website](#).

For laboratory research use only. Not for any clinical, therapeutic, or diagnostic use in humans or animals. Not for animal or human consumption.

Note

Purchasers shall not, and agree not to enable third parties to, analyze, copy, reverse engineer or otherwise attempt to determine the structure or sequence of the product.

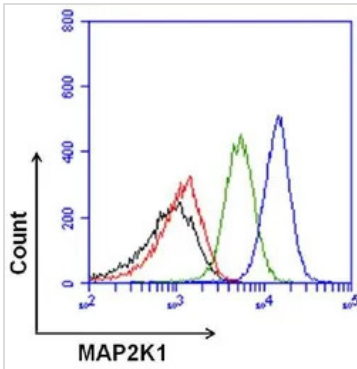
DATA IMAGES



GTx30811 ICC/IF Image

ICC/IF analysis of HeLa cells using alpha Tubulin Antibody and labeled with GTx30811 Rabbit IgG antibody (DyLight™680).

Red : Primary antibody labeled with GTx30811



GTx30811 FACS Image

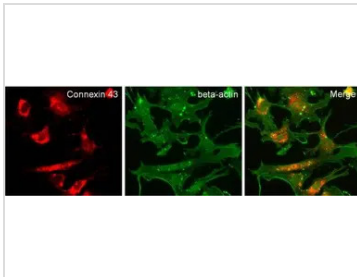
FACS analysis of permeabilized, fixed NRK cells (blue histogram) using MEK1/MAP2K1 antibody and labeled with GTx30811 Rabbit IgG antibody (DyLight™680).

Blue : Primary antibody with GTx30811

Green : Isotype control

Black : unstained control cells

Red : no-primary-antibody control

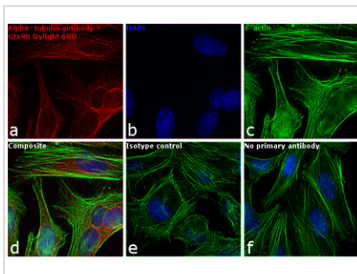


GTx30811 ICC/IF Image

ICC/IF analysis of mouse embryonic fibroblasts (MEFs) using Connexin 43 antibody and labeled with GTx30811 Rabbit IgG antibody (DyLight™680).

Red : Primary antibody labeled with GTx30811

Green : Actin



GTx30811 ICC/IF Image

ICC/IF analysis of HeLa cells using alpha Tubulin Antibody and labeled with GTx30811 Rabbit IgG antibody (DyLight™680).

Red : Primary antibody labeled with GTx30811



For full product information, images and publications, please visit our [website](https://www.genetex.com).