

Influenza A virus Nucleoprotein antibody

Cat. No. GTX30852

Host	Rabbit
Clonality	Polyclonal
Isotype	IgG
Applications	WB, ELISA
Reactivity	Influenza A virus

References (4)

Package

100 µg

Applications

Application Note

For ELISA: Use at an assay dependent dilution. For WB: Use at a dilution of 1:200-1:1,000. Optimal dilutions/concentrations should be determined by the end user.

Product Note Human and avian Nucleocapsid protein NP (H1N1). Cross-reactivity to most NP from other subtypes.

Properties

Form	Liquid
Buffer	PBS, 0.1% Gelatin
Preservative	0.1% Sodium azide
Storage	Store as concentrated solution. Centrifuge briefly prior to opening vial. Store at 4°C. DO NOT FREEZE.
Concentration	2 mg/ml (Please refer to the vial label for the specific concentration.)
Immunogen	Nucleocapsid Protein (H1N1) (A/New Caledonia/20/1999 (H1N1))
Purification	Purified IgG
Conjugation	Unconjugated

Note

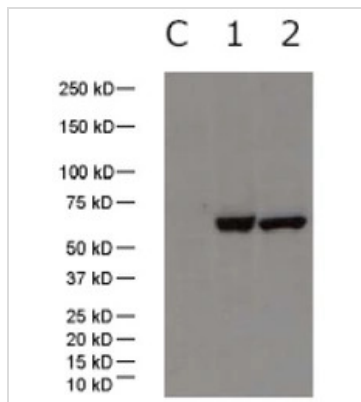
For laboratory research use only. Not for any clinical, therapeutic, or diagnostic use in humans or animals. Not for animal or human consumption.

Purchasers shall not, and agree not to enable third parties to, analyze, copy, reverse engineer or otherwise attempt to determine the structure or sequence of the product.



For full product information, images and publications, please visit our [website](#).

DATA IMAGES



GTX30852 WB Image

WB analysis of various samples using GTX30852 Influenza A virus H1N1 NP (nucleoprotein) antibody.

Lane C: 293 cell lysate control

Lane 1: 293 cell lysate expressing NP(H1N1)

Lane 1: 293 cell lysate expressing NP(H5N1)



For full product information, images and publications, please visit our [website](https://www.genetex.com).