

O-GlcNAc transferase antibody

Cat. No. GTX30868

Host	Rabbit
Clonality	Polyclonal
Isotype	IgG
Applications	WB, IP
Reactivity	Human, Mouse, Rat

References (2)

Package

100 µl

Applications

Application Note

*Optimal dilutions/concentrations should be determined by the researcher.

Suggested dilution	Recommended dilution
WB	1-2 µg/ml
IP	2.5-5.0 µg

Note : using 3.7% formaldehyde-methanol fixation

Not tested in other applications.

Calculated MW 117 kDa. ([Note](#))

Properties

Form	Liquid
Buffer	PBS
Preservative	15mM Sodium azide
Storage	Store as concentrated solution. Centrifuge briefly prior to opening vial. For short-term storage (1-2 weeks), store at 4°C. For long-term storage, aliquot and store at -20°C or below. Avoid multiple freeze-thaw cycles.
Concentration	Batch dependent (Please refer to the vial label for the specific concentration.)
Immunogen	synthetic peptide corresponding to amino acids 740-756 of human O-GlcNAc transferase, conjugated to KLH via an N-terminal added cysteine residue.
Purification	Purified by affinity chromatography
Conjugation	Unconjugated

Note

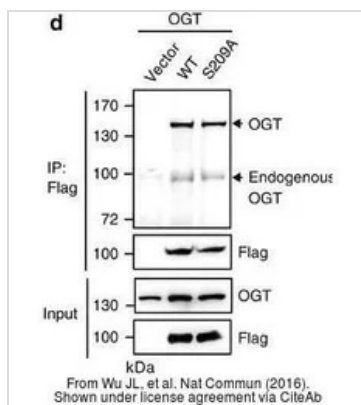
For laboratory research use only. Not for any clinical, therapeutic, or diagnostic use in humans or animals. Not for animal or human consumption.

Purchasers shall not, and agree not to enable third parties to, analyze, copy, reverse engineer or otherwise attempt to determine the structure or sequence of the product.



For full product information, images and publications, please visit our [website](#).

DATA IMAGES



GTX30868 WB Image

The data was published in the journal Nat Commun in 2016. [PMID: 27555448](https://pubmed.ncbi.nlm.nih.gov/27555448/)



For full product information, images and publications, please visit our [website](https://www.genetex.com).