

## Mouse Anti-Human IgE antibody [BE5] (FITC)

Cat. No. GTX30876

Host	Mouse
Clonality	Monoclonal
Isotype	IgG1
Applications	FCM
Reactivity	Human

Package  
100 µg

## Applications

## Application Note

\*Optimal dilutions/concentrations should be determined by the researcher.

Suggested dilution	Recommended dilution
FCM	Assay dependent

Not tested in other applications.

**Product Note** This antibody recognizes an epitope different from the ones recognized by 4G7 and 4H10 antibodies to IgE.

## Properties

Form	Liquid
Buffer	PBS
Preservative	15mM Sodium azide
Storage	Store as concentrated solution. Centrifuge briefly prior to opening vial. Store at 4°C. DO NOT FREEZE. Protect from light.
Concentration	0.1 mg/ml (Please refer to the vial label for the specific concentration.)
Immunogen	Purified human IgE.
Purification	Purified by size-exclusion chromatography
Conjugation	Fluorescein isothiocyanate (FITC) <a href="#">Wavelength</a>

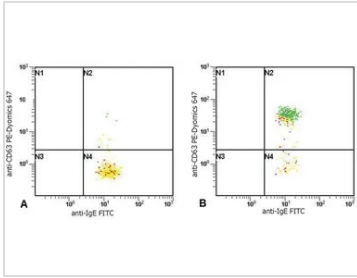
## Note

For laboratory research use only. Not for any clinical, therapeutic, or diagnostic use in humans or animals. Not for animal or human consumption.

Purchasers shall not, and agree not to enable third parties to, analyze, copy, reverse engineer or otherwise attempt to determine the structure or sequence of the product.



For full product information, images and publications, please visit our [website](#).

**DATA IMAGES**

**GTX30876 FCM Image**

FACS analysis of activated basophils ( normal heparin-treated whole blood stimulation with combination of IL-3 and Goat anti-IgE polyclonal antibody) detected by CD63 antibody [MEM-259] and GTX30876 Human IgE antibody [BE5] (FITC).

Panel A : staining of non-stimulated (control) sample

Panel B : staining of IgE stimulated sample



For full product information, images and publications, please visit our [website](https://www.genetex.com).