

LAMP2 antibody

Cat. No. GTX30881

Host	Rabbit
Clonality	Polyclonal
Isotype	IgG
Applications	WB, ICC/IF, IHC-P, ELISA
Reactivity	Human, Mouse

References (1)

Package

50 µg

Applications

Application Note

*Optimal dilutions/concentrations should be determined by the researcher.

Suggested dilution	Recommended dilution
WB	1 - 2 µg/mL
ICC/IF	10 µg/mL
IHC-P	Assay dependent
ELISA	Assay dependent

Not tested in other applications.

Calculated MW	45 kDa. (Note)
Product Note	LAMP-2 antibody cross reacts with LAMP2B and LAMP2C, but not LAMP2A.

Properties

Form	Liquid
Buffer	PBS
Preservative	0.02% Sodium azide
Storage	Store as concentrated solution. Centrifuge briefly prior to opening vial. For short-term storage (1-2 weeks), store at 4°C. For long-term storage, aliquot and store at -20°C or below. Avoid multiple freeze-thaw cycles.
Concentration	1 mg/ml (Please refer to the vial label for the specific concentration.)
Immunogen	LAMP-2 antibody was raised against a 17 amino acid synthetic peptide from near the carboxy terminus of human LAMP-2. The immunogen is located within the last 50 amino acids of LAMP-2.
Purification	Purified by antigen-affinity chromatography
Conjugation	Unconjugated



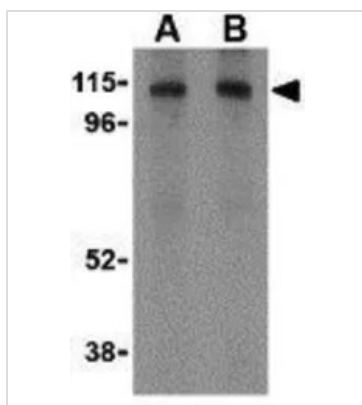
For full product information, images and publications, please visit our [website](#).

For laboratory research use only. Not for any clinical, therapeutic, or diagnostic use in humans or animals. Not for animal or human consumption.

Note

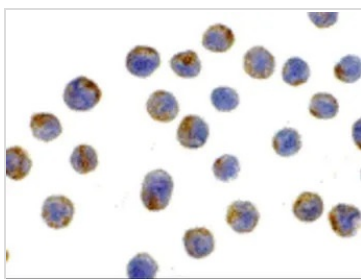
Purchasers shall not, and agree not to enable third parties to, analyze, copy, reverse engineer or otherwise attempt to determine the structure or sequence of the product.

DATA IMAGES

**GTX30881 WB Image**

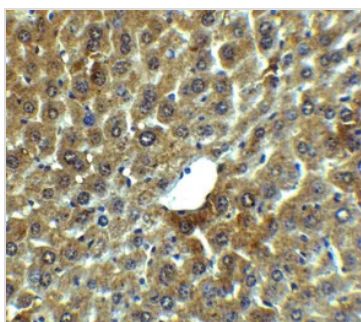
WB analysis of HepG2 cell lysate using GTX30881 LAMP2 antibody.

Working concentration : (A) 1 and (B) 2 $\mu\text{g/ml}$

**GTX30881 ICC/IF Image**

ICC/IF analysis of HepG2 cells using GTX30881 LAMP2 antibody.

Working concentration : 10 $\mu\text{g/ml}$

**GTX30881 IHC-P Image**

IHC-P analysis of mouse liver tissue using GTX30881 LAMP2 antibody.

Dilution : 5 $\mu\text{g/ml}$



For full product information, images and publications, please visit our [website](#).