

## Choline Acetyltransferase antibody

**Cat. No. GTX30990**

<b>Host</b>	Goat
<b>Clonality</b>	Polyclonal
<b>Isotype</b>	IgG
<b>Applications</b>	WB, ICC/IF, IHC-P, IHC-Fr, IHC-Wm
<b>Reactivity</b>	Human, Mouse, Rat, Chicken, Guinea pig, Primate, Avian

References ( 1 )

Package

50 µl

## Applications

**Application Note**

\*Optimal dilutions/concentrations should be determined by the researcher.

Suggested dilution	Recommended dilution
WB	1:100
ICC/IF	Assay dependent
IHC-P	1:10 - 1:500
IHC-Fr	Assay dependent
IHC-Wm	Assay dependent

Not tested in other applications.

**Calculated MW** 83 kDa. ( [Note](#) )**Product Note** Specific for the ~ 70k choline acetyltransferase protein

## Properties

<b>Form</b>	Liquid
<b>Buffer</b>	PBS, 0.5% BSA
<b>Preservative</b>	0.2% Sodium azide
<b>Storage</b>	Store as concentrated solution. Centrifuge briefly prior to opening vial. For short-term storage (1-2 weeks), store at 4°C. For long-term storage, aliquot and store at -20°C or below. Avoid multiple freeze-thaw cycles.
<b>Concentration</b>	Batch dependent (Please refer to the vial label for the specific concentration.)
<b>Immunogen</b>	Native choline acetyltransferase purified from human placenta
<b>Purification</b>	Purified by antigen-affinity chromatography
<b>Conjugation</b>	Unconjugated



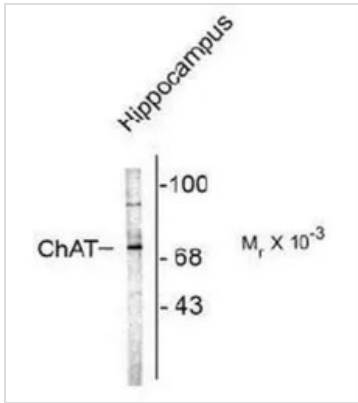
For full product information, images and publications, please visit our [website](#).

For laboratory research use only. Not for any clinical, therapeutic, or diagnostic use in humans or animals. Not for animal or human consumption.

**Note**

Purchasers shall not, and agree not to enable third parties to, analyze, copy, reverse engineer or otherwise attempt to determine the structure or sequence of the product.

## DATA IMAGES

**GTX30990 WB Image**

WB analysis of rat brain tissue lysate using GTX30990 Choline Acetyltransferase antibody.



For full product information, images and publications, please visit our [website](#).