

Dopamine Transporter antibody, C-Term

Cat. No. GTX30998

Host	Rabbit
Clonality	Polyclonal
Isotype	IgG
Applications	WB, IHC
Reactivity	Human, Mouse, Primate

Package
100 µl

Applications

Application Note

Recommended Starting Dilutions:For WB: 1:1,000**For IHC: 1:1,000****Optimal working dilutions should be determined experimentally by the end user.**Calculated MW 68 kDa. ([Note](#))

Properties

Form	Liquid
Buffer	10mM HEPES, 150mM NaCl, 0.01% BSA, 50% Glycerol
Preservative	No preservatives
Storage	Store as concentrated solution. Centrifuge briefly prior to opening vial. For short-term storage (1-2 weeks), store at 4°C. For long-term storage, aliquot and store at -20°C or below. Avoid multiple freeze-thaw cycles.
Concentration	Batch dependent (Please refer to the vial label for the specific concentration.)
Immunogen	Synthetic peptide corresponding to amino acid residues from the intracellular C-terminal region conjugated to KLH
Purification	Affinity Purified
Conjugation	Unconjugated

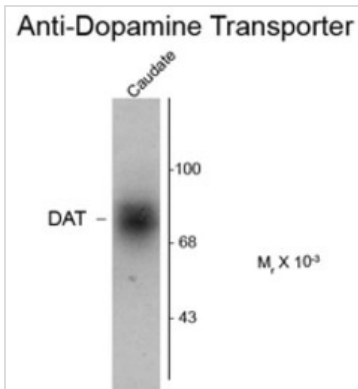
Note

For laboratory research use only. Not for any clinical, therapeutic, or diagnostic use in humans or animals. Not for animal or human consumption.

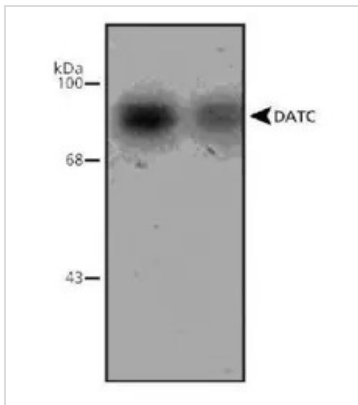
Purchasers shall not, and agree not to enable third parties to, analyze, copy, reverse engineer or otherwise attempt to determine the structure or sequence of the product.



For full product information, images and publications, please visit our [website](#).

DATA IMAGES

GTX30998 WB Image

Western blot of human caudate lysate showing specific immunolabeling of the ~88k DAT protein using Dopamine Transporter antibody, C-Term (GTX30998)


GTX30998 WB Image

Western Blot: Dopamine Transporter Antibody [GTX30998] - Detection of Dopamine Transporter in human caudate lysate using GTX30998.



For full product information, images and publications, please visit our [website](#).