

# GABA A Receptor gamma 2 (phospho Ser327) antibody

**Cat. No. GTX31012**

<b>Host</b>	Rabbit
<b>Clonality</b>	Polyclonal
<b>Isotype</b>	IgG
<b>Applications</b>	WB
<b>Reactivity</b>	Rat

**Package**  
100 µl

## Applications

### Application Note

Optimal working dilutions should be determined experimentally by the end user.

**Calculated MW** 54 kDa. ( [Note](#) )

## Properties

<b>Form</b>	Liquid
<b>Buffer</b>	10mM HEPES, 150mM NaCl, 0.01% BSA, 50% Glycerol
<b>Preservative</b>	No preservatives
<b>Storage</b>	Store as concentrated solution. Centrifuge briefly prior to opening vial. For short-term storage (1-2 weeks), store at 4°C. For long-term storage, aliquot and store at -20°C or below. Avoid multiple freeze-thaw cycles.
<b>Concentration</b>	Batch dependent (Please refer to the vial label for the specific concentration.)
<b>Immunogen</b>	Synthetic phospho-peptide corresponding to amino acid residues surrounding Ser327 conjugated to KLH
<b>Purification</b>	Affinity Purified
<b>Conjugation</b>	Unconjugated

### Note

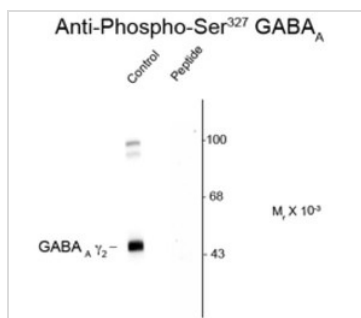
For laboratory research use only. Not for any clinical, therapeutic, or diagnostic use in humans or animals. Not for animal or human consumption.

Purchasers shall not, and agree not to enable third parties to, analyze, copy, reverse engineer or otherwise attempt to determine the structure or sequence of the product.



For full product information, images and publications, please visit our [website](#).

## DATA IMAGES



### GTx31012 WB Image

Western blot of rat cortex showing specific immunolabeling of the ~45k GABA  $\gamma$  2 protein phosphorylated at Ser327 (control) using GABAA Receptor, gamma 2 (phospho Ser327) antibody (GTx31012). Immunolabeling is blocked by the phosphopeptide (peptide) used as antigen but not by the corresponding dephosphopeptide (not shown).



For full product information, images and publications, please visit our [website](#).