

GABA A Receptor gamma 2 antibody

Cat. No. GTX31013

| | |
|---------------------|--------------------------------------------------|
| Host | Rabbit |
| Clonality | Polyclonal |
| Isotype | IgG |
| Applications | WB, IHC |
| Reactivity | Human, Mouse, Rat, Bovine, Dog, Chicken, Primate |

Package
50 µl

Applications

Application Note

*Optimal dilutions/concentrations should be determined by the researcher.

| Suggested dilution | Recommended dilution |
|--------------------|----------------------|
| WB | 1:1000 |
| IHC | 1:100 |

Not tested in other applications.

Calculated MW 54 kDa. ([Note](#))

Product Note Specific for the ~46k gamma2-subunit of the GABAA receptor in Western blots.

Properties

| | |
|----------------------|----------------------------------------------------------------------------------------------------------------------------------------------------------------------------------------------------------------------------|
| Form | Liquid |
| Buffer | 10mM HEPES, 150mM NaCl, 0.01% BSA, 50% Glycerol |
| Preservative | No preservatives |
| Storage | Store as concentrated solution. Centrifuge briefly prior to opening vial. For short-term storage (1-2 weeks), store at 4°C. For long-term storage, aliquot and store at -20°C or below. Avoid multiple freeze-thaw cycles. |
| Concentration | 0.15 mg/ml (Please refer to the vial label for the specific concentration.) |
| Immunogen | Fusion protein from the cytoplasmic loop of the gamma 2-subunit of rat GABAA receptor. |
| Purification | Purified by antigen-affinity chromatography |
| Conjugation | Unconjugated |

Note

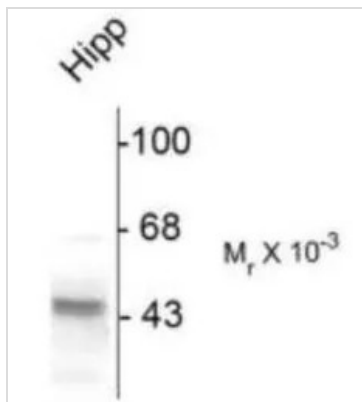
For laboratory research use only. Not for any clinical, therapeutic, or diagnostic use in humans or animals. Not for animal or human consumption.

Purchasers shall not, and agree not to enable third parties to, analyze, copy, reverse engineer or otherwise attempt to determine the structure or sequence of the product.

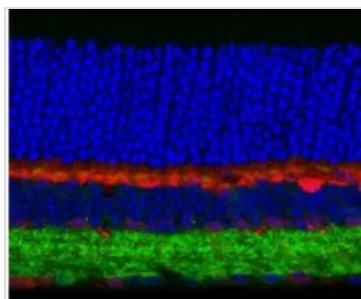


For full product information, images and publications, please visit our [website](#).

DATA IMAGES

**GTX31013 WB Image**

WB analysis of rat hippocampal (hipp) tissue lysate using GTX31013 GABA A Receptor gamma 2 antibody.

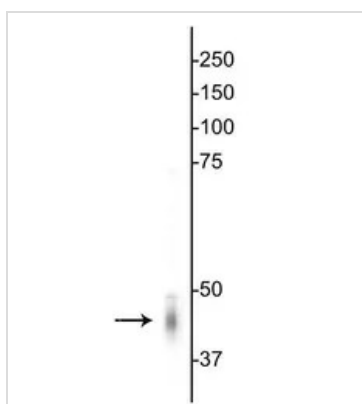
**GTX31013 IHC Image**

IHC analysis of mouse retina tissue using GTX31013 GABA A Receptor gamma 2 antibody.

Green : primary antibody

Red : calbindin

Blue : DAPI

**GTX31013 WB Image**

WB analysis of mouse brain tissue lysate using GTX31013 GABA A Receptor gamma 2 antibody.



For full product information, images and publications, please visit our [website](#).