

## Huntingtin antibody [HDC8A4]

**Cat. No. GTX31046**

<b>Host</b>	Mouse
<b>Clonality</b>	Monoclonal
<b>Isotype</b>	IgG1
<b>Applications</b>	WB, IHC-Fr, IP
<b>Reactivity</b>	Human, Mouse, Rabbit

**Package**  
50 µg

## Applications

**Application Note**

\*Optimal dilutions/concentrations should be determined by the researcher.

Suggested dilution	Recommended dilution
WB	Assay dependent
IHC-Fr	Assay dependent
IP	Assay dependent

Not tested in other applications.

**Calculated MW** 348 kDa. ([Note](#))

**Product Note**

Clone HDC8A4 reacts with an epitope corresponding to the HDC region (2703 - 2911 amino acids) of the huntingtin protein. This antibody recognizes both denatured and native huntingtin in human brain.

## Properties

<b>Form</b>	Liquid
<b>Buffer</b>	PBS
<b>Preservative</b>	0.09% Sodium azide
<b>Storage</b>	Store as concentrated solution. Centrifuge briefly prior to opening vial. For short-term storage (1-2 weeks), store at 4°C. For long-term storage, aliquot and store at -20°C or below. Avoid multiple freeze-thaw cycles.
<b>Concentration</b>	1.0 mg/ml (Please refer to the vial label for the specific concentration.)
<b>Immunogen</b>	Recombinant protein corresponding to amino acids 2703 - 2911 of huntingtin.
<b>Purification</b>	Protein G purified
<b>Conjugation</b>	Unconjugated



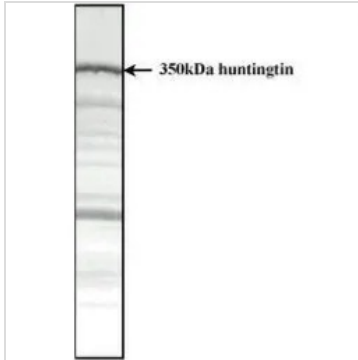
For full product information, images and publications, please visit our [website](#).

For laboratory research use only. Not for any clinical, therapeutic, or diagnostic use in humans or animals. Not for animal or human consumption.

**Note**

Purchasers shall not, and agree not to enable third parties to, analyze, copy, reverse engineer or otherwise attempt to determine the structure or sequence of the product.

## DATA IMAGES

**GTX31046 WB Image**

WB analysis of normal human cerebral cortex tissue lysate using GTX31046 Huntingtin antibody [HDC8A4].



For full product information, images and publications, please visit our [website](#).