

## NMDAR2B (phospho Tyr1472) antibody

Cat. No. GTX31086

Host	Rabbit
Clonality	Polyclonal
Isotype	IgG
Applications	WB
Reactivity	Human, Mouse, Rat, Zebrafish, Bovine, Dog, Chicken, Primate

Package

50 µl

## Applications

## Application Note

\*Optimal dilutions/concentrations should be determined by the researcher.

Suggested dilution	Recommended dilution
WB	1:1000

Not tested in other applications.

Calculated MW 166 kDa. ( [Note](#) )

## Product Note

Specific for the ~180k NMDAR NR2B-subunit protein phosphorylated at Tyr1472 in Western blots. The antibody also labels proteins of ~65k and ~115k. Immunolabeling is completely blocked by blocked by either gamma-Ptase or by the phosphopeptide used as the antigen but not by the corresponding dephosphopeptide.

## Properties

Form	Liquid
Buffer	10mM HEPES, 150mM NaCl, 0.01% BSA, 50% Glycerol
Preservative	No preservatives
Storage	Store as concentrated solution. Centrifuge briefly prior to opening vial. For short-term storage (1-2 weeks), store at 4°C. For long-term storage, aliquot and store at -20°C or below. Avoid multiple freeze-thaw cycles.
Concentration	Batch dependent (Please refer to the vial label for the specific concentration.)
Immunogen	Phosphopeptide corresponding to amino acid residues surrounding the phosphoTyr1472 of NMDA NR2B.
Purification	Purified by antigen-affinity chromatography
Conjugation	Unconjugated

## Note

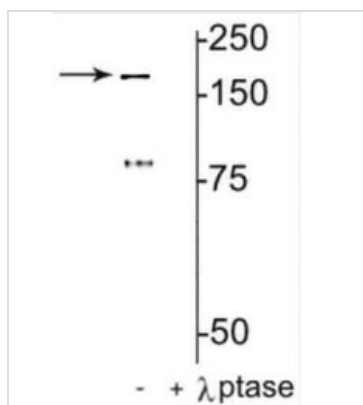
For laboratory research use only. Not for any clinical, therapeutic, or diagnostic use in humans or animals. Not for animal or human consumption.

Purchasers shall not, and agree not to enable third parties to, analyze, copy, reverse engineer or otherwise attempt to determine the structure or sequence of the product.



For full product information, images and publications, please visit our [website](#).

## DATA IMAGES



### GTX31086 WB Image

WB analysis of rat hippocampal lysate using GTX31086 NMDAR2B (phospho Tyr1472) antibody.

Lane 1 : without lambda phosphatase

Lane 2 : lysate treatment with lambda phosphatase (400 units/100uL lysate for 30 min)



For full product information, images and publications, please visit our [website](https://www.genetex.com).