

Parkin (phospho Ser101) antibody

Cat. No. GTX31094

Host	Rabbit
Clonality	Polyclonal
Isotype	IgG
Application	WB
Reactivity	Human

Package
100 µl

APPLICATION

Application Note

*Optimal dilutions/concentrations should be determined by the researcher.

Suggested dilution	Recommended dilution
WB	Assay dependent
Not tested in other applications.	

Calculated MW 52 kDa. ([Note](#))

PROPERTIES

Form	Liquid
Buffer	10mM HEPES, 150mM NaCl, 0.01% BSA, 50% Glycerol
Preservative	No preservative
Storage	Store as concentrated solution. Centrifuge briefly prior to opening vial. For short-term storage (1-2 weeks), store at 4°C. For long-term storage, aliquot and store at -20°C or below. Avoid multiple freeze-thaw cycles.
Concentration	Batch dependent (Please refer to the vial label for the specific concentration.)
Immunogen	Synthetic phospho-peptide corresponding to amino acid residues surrounding Ser101 conjugated to KLH
Purification	Affinity Purified
Conjugation	Unconjugated

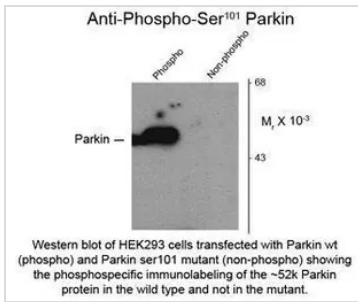
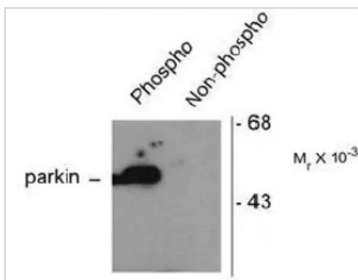
Note

For laboratory research use only. Not for any clinical, therapeutic, or diagnostic use in humans or animals. Not for animal or human consumption.

Purchasers shall not, and agree not to enable third parties to, analyze, copy, reverse engineer or otherwise attempt to determine the structure or sequence of the product.



For full product information, images and publications, please visit our [website](#).

DATA IMAGES

GTx31094 WB Image

GTx31094 WB Image

Western Blot: Parkin (phospho-Ser101) Antibody [GTx31094] - HEK293 cells transfected with Parkin WT (Phospho) and Parkin S101 mutant (non-phospho) showing the phospho-specific immunolabeling of the ~ 52 k parkin protein. The immunolabeling is absent in the parkin S101 mutant.



For full product information, images and publications, please visit our [website](https://www.genetex.com).