

Serotonin antibody [5-HT-H209]

Cat. No. GTX31099

Host	Mouse
Clonality	Monoclonal
Isotype	IgG1
Applications	ICC/IF, IHC-P, IHC-Fr, IHC-Wm, IHC
Reactivity	Species independent

References (11)

★★★★★ Review (1)

Package

100 µl

Applications

Application Note

*Optimal dilutions/concentrations should be determined by the researcher.

Suggested dilution	Recommended dilution
ICC/IF	1:50
IHC-P	1:50-1:100
IHC-Fr	1:50-1:100
IHC-Wm	Assay dependent
IHC	Assay dependent

Note : Proteinase K antigen retrieval is recommended for FFPE tissues.

Not tested in other applications.

Properties

Form	Liquid
Buffer	Tissue culture supernatant diluted in 50mM Tris-HCl
Preservative	15mM Sodium Azide
Storage	Store as concentrated solution. Centrifuge briefly prior to opening vial. Store at 4°C. DO NOT FREEZE.
Concentration	Batch dependent (Please refer to the vial label for the specific concentration.)
Immunogen	5-Hydroxytryptamine hydrochloride (3-(2-aminoethyl)-5-hydroxyindole;serotonin)
Purification	unpurified Tissue culture supernatant
Conjugation	Unconjugated

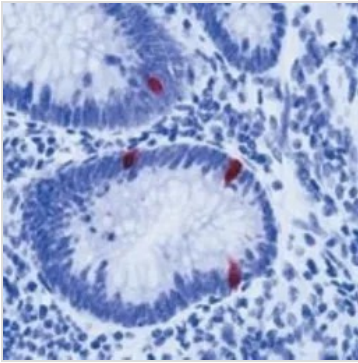


For full product information, images and publications, please visit our [website](#).

Note

For laboratory research use only. Not for any clinical, therapeutic, or diagnostic use in humans or animals. Not for animal or human consumption.

Purchasers shall not, and agree not to enable third parties to, analyze, copy, reverse engineer or otherwise attempt to determine the structure or sequence of the product.

DATA IMAGES

GTX31099 IHC-P Image

IHC-P analysis of human appendix tissue using GTX31099 Serotonin antibody [5-HT-H209].



For full product information, images and publications, please visit our [website](#).