

## Serotonin Transporter antibody, Internal

Cat. No. GTX31103

|              |                   |
|--------------|-------------------|
| Host         | Goat              |
| Clonality    | Polyclonal        |
| Isotype      | IgG               |
| Applications | WB, ICC/IF, ELISA |
| Reactivity   | Human             |

Package  
100 µg

## Applications

## Application Note

\*Optimal dilutions/concentrations should be determined by the researcher.

| Suggested dilution | Recommended dilution |
|--------------------|----------------------|
| WB                 | 1-3 µg/mL            |
| ICC/IF             | 10 µg/ml/ml          |
| ELISA              | ≤1:32000             |

Not tested in other applications.

Calculated MW 70 kDa. ( [Note](#) )

## Properties

|               |                                                                                                                                                                                                                            |
|---------------|----------------------------------------------------------------------------------------------------------------------------------------------------------------------------------------------------------------------------|
| Form          | Liquid                                                                                                                                                                                                                     |
| Buffer        | TBS, 0.5% BSA                                                                                                                                                                                                              |
| Preservative  | 0.02% Sodium azide                                                                                                                                                                                                         |
| Storage       | Store as concentrated solution. Centrifuge briefly prior to opening vial. For short-term storage (1-2 weeks), store at 4°C. For long-term storage, aliquot and store at -20°C or below. Avoid multiple freeze-thaw cycles. |
| Concentration | 0.50 mg/ml (Please refer to the vial label for the specific concentration.)                                                                                                                                                |
| Immunogen     | Peptide with sequence C-LHQGERETWGK, from the internal region of the protein sequence according to NP_001036.1.                                                                                                            |
| Purification  | Purified by ammonium sulphate precipitation followed by antigen affinity chromatography                                                                                                                                    |
| Conjugation   | Unconjugated                                                                                                                                                                                                               |

## Note

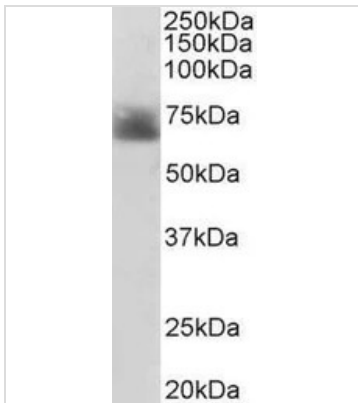
For laboratory research use only. Not for any clinical, therapeutic, or diagnostic use in humans or animals. Not for animal or human consumption.

Purchasers shall not, and agree not to enable third parties to, analyze, copy, reverse engineer or otherwise attempt to determine the structure or sequence of the product.



For full product information, images and publications, please visit our [website](#).

## DATA IMAGES

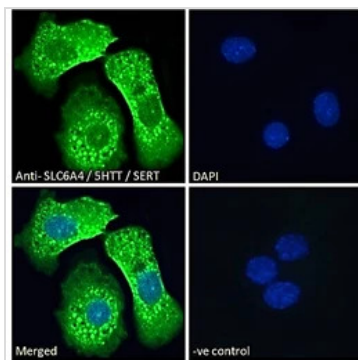


### GTX31103 WB Image

WB analysis of human colon lysate using GTX31103 Serotonin Transporter antibody, Internal.

Dilution : 2µg/ml

Loading : 35µg protein in RIPA buffer



### GTX31103 ICC/IF Image

ICC/IF analysis of PFA-fixed HepG2 cells using using GTX31103 Serotonin Transporter antibody, Internal.

Green : Primary antibody

Blue : DAPI

Negative control: Unimmunized goat IgG

Permeabilization : 0.15% Triton

Dilution : 10 µg/mL



For full product information, images and publications, please visit our [website](https://www.genetex.com).