

## PAX8 antibody [1F8-3A8]

Cat. No. GTX31119

|                     |                       |
|---------------------|-----------------------|
| <b>Host</b>         | Mouse                 |
| <b>Clonality</b>    | Monoclonal            |
| <b>Isotype</b>      | IgG1                  |
| <b>Applications</b> | WB, ICC/IF, IHC-P     |
| <b>Reactivity</b>   | Human, Mouse, Primate |

References ( 1 )

Package

100 µg

## Applications

## Application Note

\*Optimal dilutions/concentrations should be determined by the researcher.

| Suggested dilution | Recommended dilution |
|--------------------|----------------------|
| WB                 | 1:500 - 1:2000       |
| ICC/IF             | 1:50-1:200           |
| IHC-P              | 1:20-1:200           |

Not tested in other applications.

**Calculated MW** 48 kDa. ( [Note](#) )

## Properties

|                      |                                                                                                                                                                                                                            |
|----------------------|----------------------------------------------------------------------------------------------------------------------------------------------------------------------------------------------------------------------------|
| <b>Form</b>          | Liquid                                                                                                                                                                                                                     |
| <b>Buffer</b>        | PBS, 0.1% BSA, 30% Glycerol                                                                                                                                                                                                |
| <b>Preservative</b>  | 0.05% Sodium azide                                                                                                                                                                                                         |
| <b>Storage</b>       | Store as concentrated solution. Centrifuge briefly prior to opening vial. For short-term storage (1-2 weeks), store at 4°C. For long-term storage, aliquot and store at -20°C or below. Avoid multiple freeze-thaw cycles. |
| <b>Concentration</b> | 1 mg/ml (Please refer to the vial label for the specific concentration.)                                                                                                                                                   |
| <b>Immunogen</b>     | Purified internal fragment of human recombinant PAX8 expressed in E. coli.                                                                                                                                                 |
| <b>Purification</b>  | Protein A purified                                                                                                                                                                                                         |
| <b>Conjugation</b>   | Unconjugated                                                                                                                                                                                                               |

## Note

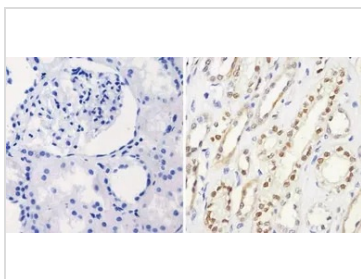
For laboratory research use only. Not for any clinical, therapeutic, or diagnostic use in humans or animals. Not for animal or human consumption.

Purchasers shall not, and agree not to enable third parties to, analyze, copy, reverse engineer or otherwise attempt to determine the structure or sequence of the product.



For full product information, images and publications, please visit our [website](#).

DATA IMAGES



**GTX31119 IHC-P Image**

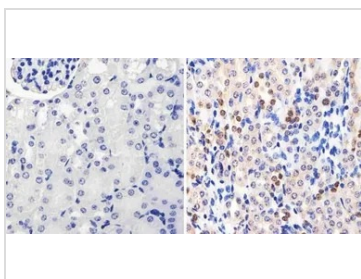
IHC-P analysis of human kidney tissue using GTX31119 PAX8 antibody [1F8-3A8].

Right : Primary antibody

Left : Negative control without primary antibody

Antigen retrieval : 10mM sodium citrate (pH 6.0), microwaved for 8-15 min

Dilution : 1:100



**GTX31119 IHC-P Image**

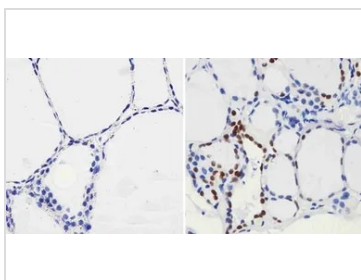
IHC-P analysis of mouse kidney tissue using GTX31119 PAX8 antibody [1F8-3A8].

Right : Primary antibody

Left : Negative control without primary antibody

Antigen retrieval : 10mM sodium citrate (pH 6.0), microwaved for 8-15 min

Dilution : 1:20



**GTX31119 IHC-P Image**

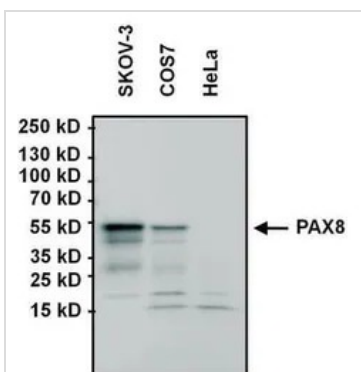
IHC-P analysis of human thyroid tissue using GTX31119 PAX8 antibody [1F8-3A8].

Right : Primary antibody

Left : Negative control without primary antibody

Antigen retrieval : 10mM sodium citrate (pH 6.0), microwaved for 8-15 min

Dilution : 1:100



**GTX31119 WB Image**

WB analysis of 60 ug of SKOV-3, COS7, and negative control HeLa whole cell lysates using GTX31119 PAX8 antibody [1F8-3A8].

Dilution : 1:1000



For full product information, images and publications, please visit our [website](#).