

TPH2 (phospho Ser19) antibody

Cat. No. GTX31131

Host	Rabbit
Clonality	Polyclonal
Isotype	IgG
Applications	WB
Reactivity	Rat

Package
100 µl

Applications

Application Note

*Optimal dilutions/concentrations should be determined by the researcher.

Suggested dilution	Recommended dilution
WB	Assay dependent

Not tested in other applications.

Calculated MW 56 kDa. ([Note](#))

Properties

Form	Liquid
Buffer	10mM HEPES, 150mM NaCl, 0.01% BSA, 50% Glycerol
Preservative	No preservatives
Storage	Store as concentrated solution. Centrifuge briefly prior to opening vial. For short-term storage (1-2 weeks), store at 4°C. For long-term storage, aliquot and store at -20°C or below. Avoid multiple freeze-thaw cycles.
Concentration	Batch dependent (Please refer to the vial label for the specific concentration.)
Immunogen	Synthetic phospho-peptide corresponding to amino acid residues surrounding Ser19 conjugated to KLH
Purification	Affinity Purified
Conjugation	Unconjugated

Note

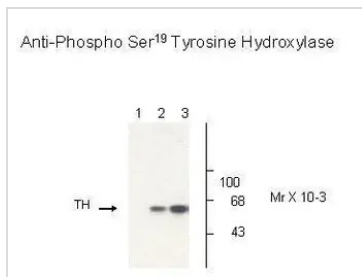
For laboratory research use only. Not for any clinical, therapeutic, or diagnostic use in humans or animals. Not for animal or human consumption.

Purchasers shall not, and agree not to enable third parties to, analyze, copy, reverse engineer or otherwise attempt to determine the structure or sequence of the product.

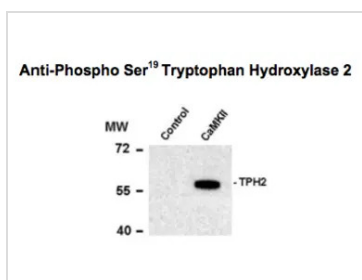


For full product information, images and publications, please visit our [website](#).

DATA IMAGES

**GTX31131 WB Image**

Western Blot: Tyrosine Hydroxylase (phospho Ser19) Antibody [GTX31131] - Non-phospho-recombinant tyrosine hydroxylase (Lane 1), PC-12 cell lysate (Lane 2), and PC-12 cell lysate stimulated with KCl, 30 mM for 10 min (Lane 3) showing specific immunolabeling of the ~60k tyrosine hydroxylase phosphorylated at Ser19.

**GTX31131 WB Image**

Western blot of recombinant tryptophan hydroxylase incubated in the absence (Control) and presence of Ca²⁺/calmodulin dependent kinase II (CaMKII) showing specific immunolabeling of the ~55k tryptophan hydroxylase protein phosphorylated at Ser19 using TPH2 (phospho Ser19) antibody (GTX31131)



For full product information, images and publications, please visit our [website](#).