

## Tyrosine Hydroxylase (phospho Ser31) antibody

**Cat. No. GTX31133**

<b>Host</b>	Rabbit
<b>Clonality</b>	Polyclonal
<b>Isotype</b>	IgG
<b>Applications</b>	WB, ICC/IF, IHC-Fr, IHC
<b>Reactivity</b>	Mouse, Rat, Primate

Package  
50 µl

## Applications

**Application Note**

\*Optimal dilutions/concentrations should be determined by the researcher.

Suggested dilution	Recommended dilution
WB	1:1000
ICC/IF	Assay dependent
IHC-Fr	1:1000
IHC	1:1000

Not tested in other applications.

**Calculated MW** 56 kDa. ([Note](#))**Product Note** Specific for the ~60k tyrosine hydroxylase protein phosphorylated at Ser31.

## Properties

<b>Form</b>	Liquid
<b>Buffer</b>	10mM HEPES, 150mM NaCl, 0.01% BSA, 50% Glycerol
<b>Preservative</b>	No preservatives
<b>Storage</b>	Store as concentrated solution. Centrifuge briefly prior to opening vial. For short-term storage (1-2 weeks), store at 4°C. For long-term storage, aliquot and store at -20°C or below. Avoid multiple freeze-thaw cycles.
<b>Concentration</b>	0.1 mg/ml (Please refer to the vial label for the specific concentration.)
<b>Immunogen</b>	Phosphopeptide corresponding to amino acid residues surrounding phospho-Ser31 of rat tyrosine hydroxylase (TH).
<b>Purification</b>	Purified by antigen-affinity chromatography
<b>Conjugation</b>	Unconjugated

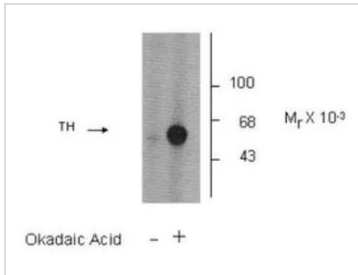
For full product information, images and publications, please visit our [website](#).

For laboratory research use only. Not for any clinical, therapeutic, or diagnostic use in humans or animals. Not for animal or human consumption.

**Note**

Purchasers shall not, and agree not to enable third parties to, analyze, copy, reverse engineer or otherwise attempt to determine the structure or sequence of the product.

## DATA IMAGES

**GTX31133 WB Image**

WB analysis of PC-12 cells treated with or without okadaic acid (OA, 1  $\mu$ M for 60 min) using GTX31133 Tyrosine Hydroxylase (phospho Ser31) antibody.



For full product information, images and publications, please visit our [website](#).