

## RhoA + RhoC antibody [1B3-4A10]

Cat. No. GTX31144

Host	Mouse
Clonality	Monoclonal
Isotype	IgG
Applications	WB, ICC/IF, IHC-P, IP
Reactivity	Human, Mouse

**Package**  
100 µg

## Applications

## Application Note

\*Optimal dilutions/concentrations should be determined by the researcher.

Suggested dilution	Recommended dilution
WB	1:500 - 1:1500
ICC/IF	1:20-1:200
IHC-P	1:50-1:500
IP	2 µg

Not tested in other applications.

**Product Note** This antibody detects GTPases RhoA and RhoC, but does not react with RhoB.

## Properties

Form	Liquid
Buffer	PBS, 0.1% BSA, 30% Glycerol
Preservative	0.05% Sodium azide
Storage	Store as concentrated solution. Centrifuge briefly prior to opening vial. For short-term storage (1-2 weeks), store at 4°C. For long-term storage, aliquot and store at -20°C or below. Avoid multiple freeze-thaw cycles.
Concentration	1 mg/ml (Please refer to the vial label for the specific concentration.)
Immunogen	Full-length human recombinant RhoA protein.
Purification	Protein A purified
Conjugation	Unconjugated

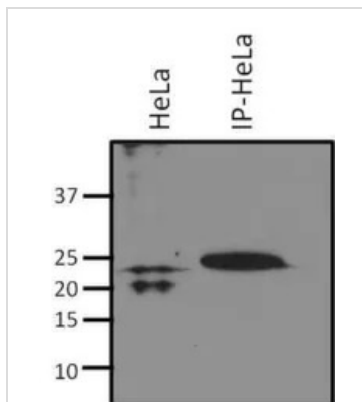
## Note

For laboratory research use only. Not for any clinical, therapeutic, or diagnostic use in humans or animals. Not for animal or human consumption.

Purchasers shall not, and agree not to enable third parties to, analyze, copy, reverse engineer or otherwise attempt to determine the structure or sequence of the product.



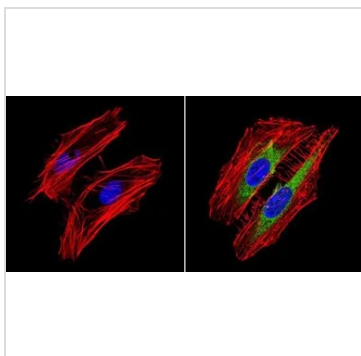
For full product information, images and publications, please visit our [website](#).

**DATA IMAGES**

**GTX31144 IP Image**

IP analysis of HeLa cell lysates using GTX31144 RhoA + RhoC antibody [1B3-4A10].

IP reaction : 2µg antibody / 500µg lysate

Dilution : 1:1000


**GTX31144 ICC/IF Image**

ICC/IF analysis of HeLa cells using GTX31144 RhoA + RhoC antibody [1B3-4A10]. Cells were probed without (left) or with(right) an antibody.

Green : Primary antibody

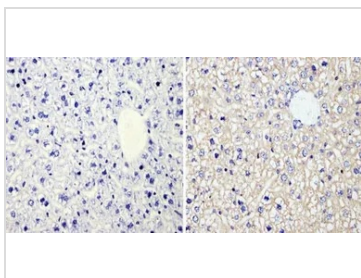
Blue : Nuclei

Red : Actin

Fixation : Formalin

Permeabilization : 0.1% Triton X-100 in TBS for 5-10 minute

Dilution : 1:100 and incubated overnight at 4°C


**GTX31144 IHC-P Image**

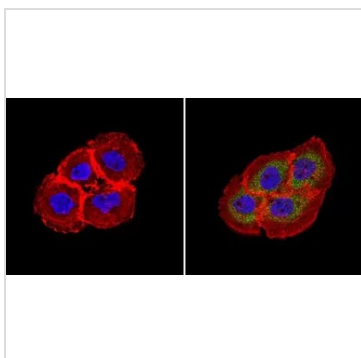
IHC-P analysis of mouse liver tissue using GTX31144 RhoA + RhoC antibody [1B3-4A10].

Right : Primary antibody

Left : Negative control without primary antibody

Antigen retrieval : 10mM sodium citrate (pH 6.0), microwaved for 8-15 min

Dilution : 1:100


**GTX31144 ICC/IF Image**

ICC/IF analysis of A431 cells using GTX31144 RhoA + RhoC antibody [1B3-4A10]. Cells were probed without (left) or with(right) an antibody.

Green : Primary antibody

Blue : Nuclei

Red : Actin

Fixation : Formalin

Permeabilization : 0.1% Triton X-100 in TBS for 5-10 minute

Dilution : 1:100 and incubated overnight at 4°C



For full product information, images and publications, please visit our [website](https://www.genetex.com).