

## RhoA antibody [1B8-1C7]

Cat. No. GTX31145

Host	Mouse
Clonality	Monoclonal
Isotype	IgG1
Applications	WB
Reactivity	Human, Mouse, Rat

References ( 1 )

Package

100 µg

## Applications

## Application Note

\*Optimal dilutions/concentrations should be determined by the researcher.

Suggested dilution	Recommended dilution
WB	1:500-1:2000

Not tested in other applications.

**Calculated MW** 22 kDa. ( [Note](#) )

**Product Note** This antibody detects recombinant RhoA, but not recombinant RhoB or recombinant RhoC.

## Properties

Form	Liquid
Buffer	PBS, 0.1% BSA
Preservative	0.05% Sodium azide
Storage	Store as concentrated solution. Centrifuge briefly prior to opening vial. For short-term storage (1-2 weeks), store at 4°C. For long-term storage, aliquot and store at -20°C or below. Avoid multiple freeze-thaw cycles.
Concentration	1 mg/ml (Please refer to the vial label for the specific concentration.)
Immunogen	Full-length recombinant His-tagged human RhoA
Purification	Protein A purified
Conjugation	Unconjugated

## Note

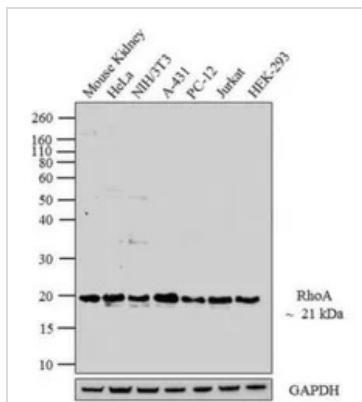
For laboratory research use only. Not for any clinical, therapeutic, or diagnostic use in humans or animals. Not for animal or human consumption.

Purchasers shall not, and agree not to enable third parties to, analyze, copy, reverse engineer or otherwise attempt to determine the structure or sequence of the product.



For full product information, images and publications, please visit our [website](#).

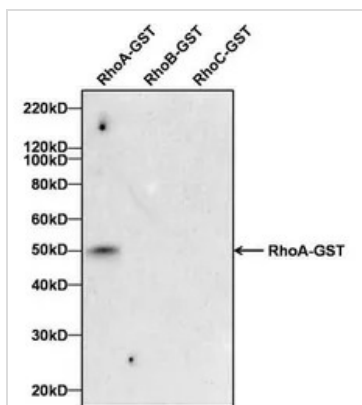
DATA IMAGES



**GTX31145 WB Image**

WB analysis of whole cell extracts (30 µg lysate) of Mouse Kidney (Lane 1), HeLa (Lane 2), NIH/3T3 (Lane 3), A-431 (Lane 4), PC-12 (Lane 5), Jurkat (Lane 6), and HEK-293 (Lane 7) using GTX31145 RhoA antibody [1B8-1C7].

Dilution : 1:500-1:2000

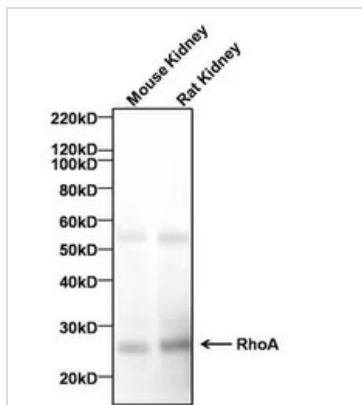


**GTX31145 WB Image**

WB analysis of human recombinant RhoA-GST (Lane 1), RhoB-GST (Lane 2) and RhoC-GST (Lane 3) using GTX31145 RhoA antibody [1B8-1C7].

Dilution : 2 µg/ml

Loading : 100 ng



**GTX31145 WB Image**

WB analysis of 40 µg of mouse kidney and rat kidney tissue lysate using GTX31145 RhoA antibody [1B8-1C7].

Dilution : 2 µg/ml



For full product information, images and publications, please visit our [website](http://www.genetex.com).