

RhoA antibody [1B8-1C7]

Cat. No. GTX31145

| | |
|--------------|-------------------|
| Host | Mouse |
| Clonality | Monoclonal |
| Isotype | IgG1 |
| Applications | WB |
| Reactivity | Human, Mouse, Rat |

References (1)

Package

100 µg

Applications

Application Note

*Optimal dilutions/concentrations should be determined by the researcher.

| Suggested dilution | Recommended dilution |
|--------------------|----------------------|
| WB | 1:500-1:2000 |

Not tested in other applications.

Calculated MW 22 kDa. ([Note](#))

Product Note This antibody detects recombinant RhoA, but not recombinant RhoB or recombinant RhoC.

Properties

| | |
|---------------|----------------------------------------------------------------------------------------------------------------------------------------------------------------------------------------------------------------------------|
| Form | Liquid |
| Buffer | PBS, 0.1% BSA |
| Preservative | 0.05% Sodium azide |
| Storage | Store as concentrated solution. Centrifuge briefly prior to opening vial. For short-term storage (1-2 weeks), store at 4°C. For long-term storage, aliquot and store at -20°C or below. Avoid multiple freeze-thaw cycles. |
| Concentration | 1 mg/ml (Please refer to the vial label for the specific concentration.) |
| Immunogen | Full-length recombinant His-tagged human RhoA |
| Purification | Protein A purified |
| Conjugation | Unconjugated |

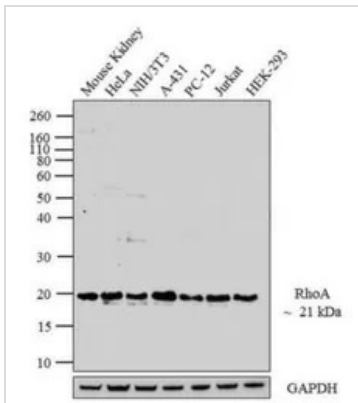
Note

For laboratory research use only. Not for any clinical, therapeutic, or diagnostic use in humans or animals. Not for animal or human consumption.

Purchasers shall not, and agree not to enable third parties to, analyze, copy, reverse engineer or otherwise attempt to determine the structure or sequence of the product.

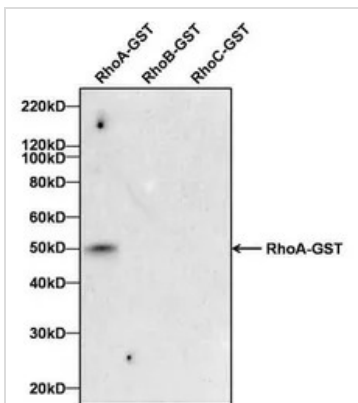


For full product information, images and publications, please visit our [website](#).

DATA IMAGES

GTX31145 WB Image

WB analysis of whole cell extracts (30 µg lysate) of Mouse Kidney (Lane 1), HeLa (Lane 2), NIH/3T3 (Lane 3), A-431 (Lane 4), PC-12 (Lane 5), Jurkat (Lane 6), and HEK-293 (Lane 7) using GTX31145 RhoA antibody [1B8-1C7].

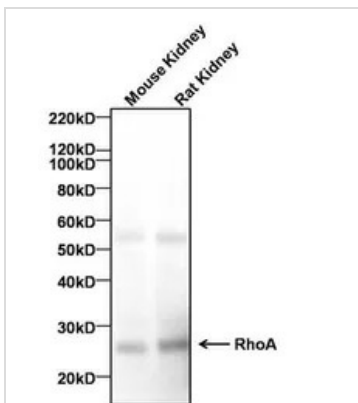
Dilution : 1:500-1:2000


GTX31145 WB Image

WB analysis of human recombinant RhoA-GST (Lane 1), RhoB-GST (Lane 2) and RhoC-GST (Lane 3) using GTX31145 RhoA antibody [1B8-1C7].

Dilution : 2 µg/ml

Loading : 100 ng


GTX31145 WB Image

WB analysis of 40 µg of mouse kidney and rat kidney tissue lysate using GTX31145 RhoA antibody [1B8-1C7].

Dilution : 2 µg/ml



For full product information, images and publications, please visit our [website](http://www.genetex.com).