

## Rap1 antibody [1D2-1C64]

Cat. No. GTX31146

<b>Host</b>	Mouse
<b>Clonality</b>	Monoclonal
<b>Isotype</b>	IgG2a
<b>Applications</b>	WB, ICC/IF, IHC-P, IP
<b>Reactivity</b>	Human, Mouse

**Package**  
100 µg

## Applications

## Application Note

\*Optimal dilutions/concentrations should be determined by the researcher.

Suggested dilution	Recommended dilution
WB	1:500 - 1:1000
ICC/IF	1:10-1:200
IHC-P	1:100-1:1000
IP	2 µg

Not tested in other applications.

**Calculated MW** 21 kDa. ( [Note](#) )

## Properties

<b>Form</b>	Liquid
<b>Buffer</b>	PBS, 0.1% BSA, 30% Glycerol
<b>Preservative</b>	0.05% Sodium azide
<b>Storage</b>	Store as concentrated solution. Centrifuge briefly prior to opening vial. For short-term storage (1-2 weeks), store at 4°C. For long-term storage, aliquot and store at -20°C or below. Avoid multiple freeze-thaw cycles.
<b>Concentration</b>	1 mg/ml (Please refer to the vial label for the specific concentration.)
<b>Immunogen</b>	Recombinant full-length human Rap1
<b>Purification</b>	Protein A purified
<b>Conjugation</b>	Unconjugated

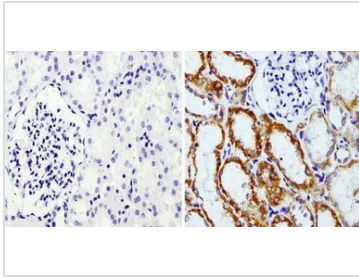
## Note

For laboratory research use only. Not for any clinical, therapeutic, or diagnostic use in humans or animals. Not for animal or human consumption.

Purchasers shall not, and agree not to enable third parties to, analyze, copy, reverse engineer or otherwise attempt to determine the structure or sequence of the product.



For full product information, images and publications, please visit our [website](#).

**DATA IMAGES**

**GTX31146 IHC-P Image**

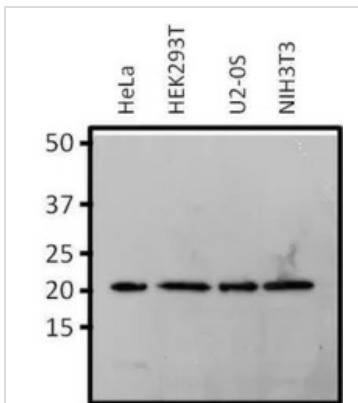
IHC-P analysis of human kidney tissue using GTX31146 Rap1 antibody [1D2-1C64].

Right : Primary antibody

Left : Negative control without primary antibody

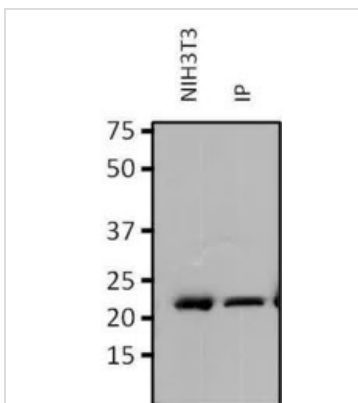
Antigen retrieval : 10mM sodium citrate (pH 6.0), microwaved for 8-15 min

Dilution : 1:200


**GTX31146 WB Image**

WB analysis of 25 µg of various whole cell lysates per well using GTX31146 Rap1 antibody [1D2-1C64].

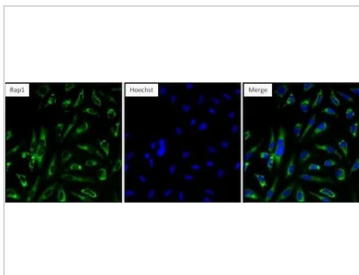
Dilution : 1:500


**GTX31146 IP Image**

IP analysis of NIH3T3 cell lysates using GTX31146 Rap1 antibody [1D2-1C64].

IP reaction : 2µg antibody / 750µg lysate

Dilution : 1:500


**GTX31146 ICC/IF Image**

ICC/IF analysis of HeLa cells using GTX31146 Rap1 antibody [1D2-1C64].

Fixation : Formalin

Permeabilization : 0.1% Triton X-100 in TBS for 10 minutes

Dilution : 1:100 for at least 1 hour at room temperature



For full product information, images and publications, please visit our [website](https://www.genetex.com).