

## SCF antibody

Cat. No. GTX31189

Host	Goat
Clonality	Polyclonal
Isotype	IgG
Applications	WB, ICC/IF, ELISA, IHC, Neutralizing/Inhibition
Reactivity	Human

Package  
100 µg

## Applications

## Application Note

\*Optimal dilutions/concentrations should be determined by the researcher.

Suggested dilution	Recommended dilution
WB	Assay dependent
ICC/IF	Assay dependent
ELISA	Assay dependent
IHC	Assay dependent
Neutralizing/Inhibition	Assay dependent
Not tested in other applications.	

Calculated MW 31 kDa. ( [Note](#) )

## Properties

Form	Liquid
Buffer	PBS
Preservative	No preservatives
Storage	Store as concentrated solution. Centrifuge briefly prior to opening vial. For short-term storage (1-2 weeks), store at 4°C. For long-term storage, aliquot and store at -20°C or below. Avoid multiple freeze-thaw cycles.
Concentration	Batch dependent (Please refer to the vial label for the specific concentration.)
Immunogen	E.coli derived Recombinant Human SCF
Purification	Affinity Purified
Conjugation	Unconjugated

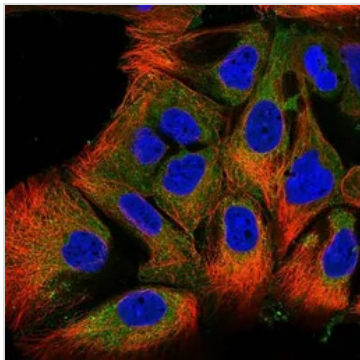
For full product information, images and publications, please visit our [website](#).

For laboratory research use only. Not for any clinical, therapeutic, or diagnostic use in humans or animals. Not for animal or human consumption.

**Note**

Purchasers shall not, and agree not to enable third parties to, analyze, copy, reverse engineer or otherwise attempt to determine the structure or sequence of the product.

## DATA IMAGES



### GTX31189 ICC/IF Image

ICC/IF analysis of CACO-2 cells using SCF antibody at a concentration of 2.0 µg/ml (green).



For full product information, images and publications, please visit our [website](#).

Date 2026 / 01 / 28 Page 2 of 2