

Aggrecan antibody [7D4]

Cat. No. GTX31216

Host	Mouse
Clonality	Monoclonal
Isotype	IgG1
Applications	WB, IHC-P, IHC-Fr, IP, ELISA
Reactivity	Human, Bovine

Package
100 µg

Applications

Application Note

*Optimal dilutions/concentrations should be determined by the researcher.

Suggested dilution	Recommended dilution
WB	Assay dependent
IHC-P	Assay dependent
IHC-Fr	Assay dependent
IP	Assay dependent
ELISA	Assay dependent

Not tested in other applications.

Calculated MW 261 kDa. ([Note](#))

Product Note Mouse anti Human Aggrecan antibody, clone 7D4 recognizes epitopes within the N-terminal G1-IGD-G2 region of aggrecan, that has been identified as a cluster 1 isoform.

Properties

Form	Liquid
Buffer	PBS
Preservative	0.09% Sodium azide
Storage	Store as concentrated solution. Centrifuge briefly prior to opening vial. For short-term storage (1-2 weeks), store at 4°C. For long-term storage, aliquot and store at -20°C or below. Avoid multiple freeze-thaw cycles.
Concentration	1.0 mg/ml (Please refer to the vial label for the specific concentration.)
Immunogen	Purified human articular cartilage aggrecan
Purification	Protein A purified From tissue culture supernatant
Conjugation	Unconjugated



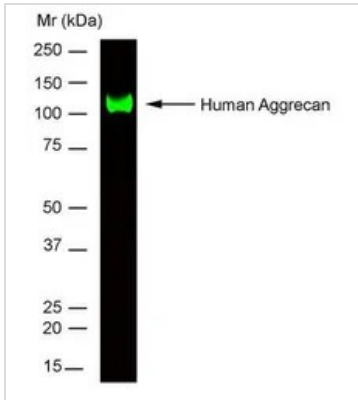
For full product information, images and publications, please visit our [website](#).

For laboratory research use only. Not for any clinical, therapeutic, or diagnostic use in humans or animals. Not for animal or human consumption.

Note

Purchasers shall not, and agree not to enable third parties to, analyze, copy, reverse engineer or otherwise attempt to determine the structure or sequence of the product.

DATA IMAGES

**GTX31216 WB Image**

WB analysis of human aggrecan recombinant protein using GTX31216 Aggrecan antibody [7D4].



For full product information, images and publications, please visit our [website](#).