

## IL2 Receptor alpha antibody [K231.3B2]

**Cat. No. GTX31218**

<b>Host</b>	Mouse
<b>Clonality</b>	Monoclonal
<b>Isotype</b>	IgG1
<b>Applications</b>	IHC-Fr, FCM
<b>Reactivity</b>	Pig

References ( 1 )

Package

100 µg

## Applications

**Application Note**

\*Optimal dilutions/concentrations should be determined by the researcher.

Suggested dilution	Recommended dilution
IHC-Fr	Assay dependent
FCM	1/25-1/200

**Note : Use 10µl of the suggested working dilution to label 10<sup>6</sup> cells in 100µl.**

Not tested in other applications.

## Properties

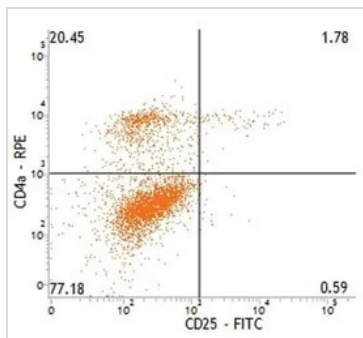
<b>Form</b>	Liquid
<b>Buffer</b>	PBS
<b>Preservative</b>	0.09% Sodium azide
<b>Storage</b>	Store as concentrated solution. Centrifuge briefly prior to opening vial. For short-term storage (1-2 weeks), store at 4°C. For long-term storage, aliquot and store at -20°C or below. Avoid multiple freeze-thaw cycles.
<b>Concentration</b>	1.0 mg/ml (Please refer to the vial label for the specific concentration.)
<b>Immunogen</b>	Con A activated porcine peripheral blood lymphocytes.
<b>Purification</b>	Protein A purified From tissue culture supernatant
<b>Conjugation</b>	Unconjugated

**Note**

For laboratory research use only. Not for any clinical, therapeutic, or diagnostic use in humans or animals. Not for animal or human consumption.

Purchasers shall not, and agree not to enable third parties to, analyze, copy, reverse engineer or otherwise attempt to determine the structure or sequence of the product.

For full product information, images and publications, please visit our [website](#).

**DATA IMAGES**

**GTX31218 FCM Image**

FACS analysis of pig peripheral blood lymphocytes using GTX31218 IL2 Receptor alpha antibody [K231.3B2].



For full product information, images and publications, please visit our [website](#).