

LAMP1 antibody [4E9/11]

Cat. No. GTX31229

Host	Mouse
Clonality	Monoclonal
Isotype	IgG1
Applications	WB, IHC-P, IHC-Fr, FCM, IP
Reactivity	Pig

References (1)

Package

100 µg

Applications

Application Note

*Optimal dilutions/concentrations should be determined by the researcher.

Suggested dilution	Recommended dilution
WB	Assay dependent
IHC-P	Assay dependent
IHC-Fr	Assay dependent
FCM	1/25-1/50
IP	Assay dependent

Note : Permeabilization step is needed.

Not tested in other applications.

Properties

Form	Liquid
Buffer	PBS
Preservative	0.09% Sodium azide
Storage	Store as concentrated solution. Centrifuge briefly prior to opening vial. For short-term storage (1-2 weeks), store at 4°C. For long-term storage, aliquot and store at -20°C or below. Avoid multiple freeze-thaw cycles.
Concentration	1.0 mg/ml (Please refer to the vial label for the specific concentration.)
Immunogen	Porcine alveolar macrophages.
Purification	Protein G purified From tissue culture supernatant
Conjugation	Unconjugated



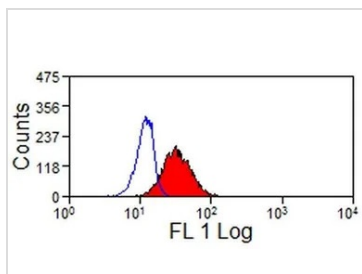
For full product information, images and publications, please visit our [website](#).

For laboratory research use only. Not for any clinical, therapeutic, or diagnostic use in humans or animals. Not for animal or human consumption.

Note

Purchasers shall not, and agree not to enable third parties to, analyze, copy, reverse engineer or otherwise attempt to determine the structure or sequence of the product.

DATA IMAGES

**GTX31229 FCM Image**

FACS analysis of pig peripheral blood granulocytes using GTX31229 LAMP1 antibody [4E9/11].



For full product information, images and publications, please visit our [website](#).