

CD203a antibody [PM18-7]

Cat. No. GTX31242

Host	Mouse
Clonality	Monoclonal
Isotype	IgG1
Applications	IHC-Fr, FCM, IP
Reactivity	Pig

Package
100 µg

Applications

Application Note

*Optimal dilutions/concentrations should be determined by the researcher.

Suggested dilution	Recommended dilution
IHC-Fr	Assay dependent
FCM	1/25-1/200
IP	Assay dependent

Note : Use 10µl of the suggested working dilution to label 10⁶ cells in 100µl.

Not tested in other applications.

Product Note

This antibody migrates as a homodimer of ~260 kDa under non-reducing conditions and a 130 kDa monomer under reducing conditions (Petersen et al. 2007) from preparations of porcine alveolar macrophages.

Properties

Form	Liquid
Buffer	PBS
Preservative	0.09% Sodium azide
Storage	Store as concentrated solution. Centrifuge briefly prior to opening vial. For short-term storage (1-2 weeks), store at 4°C. For long-term storage, aliquot and store at -20°C or below. Avoid multiple freeze-thaw cycles.
Concentration	1.0 mg/ml (Please refer to the vial label for the specific concentration.)
Immunogen	Porcine alveolar macrophages.
Purification	Protein A purified
Conjugation	Unconjugated

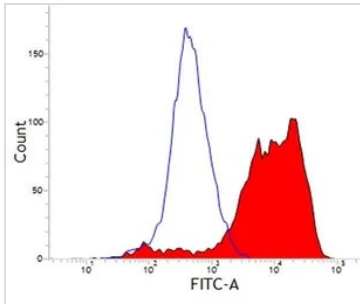


For full product information, images and publications, please visit our [website](#).

For laboratory research use only. Not for any clinical, therapeutic, or diagnostic use in humans or animals. Not for animal or human consumption.

Note

Purchasers shall not, and agree not to enable third parties to, analyze, copy, reverse engineer or otherwise attempt to determine the structure or sequence of the product.

DATA IMAGES

GTX31242 FCM Image

FACS analysis of pig alveolar macrophages using GTX31242 CD203a antibody [PM18-7].



For full product information, images and publications, please visit our [website](#).