

TLR4 antibody

Cat. No. GTX31243

Host	Goat
Clonality	Polyclonal
Isotype	IgG
Applications	WB, IHC-P
Reactivity	Human, Mouse, Rat

Package

50 µg

Applications

Application Note

*Optimal dilutions/concentrations should be determined by the researcher.

Suggested dilution	Recommended dilution
WB	1/1,000
IHC-P	1/100-1/300

Note : This product requires antigen retrieval using heat treatment prior to staining of paraffin sections. Sodium citrate buffer pH 6.0 is recommended for this purpose.

Not tested in other applications.

Calculated MW 96 kDa. ([Note](#))

Properties

Form	Liquid
Buffer	PBS, 0.1% BSA
Preservative	0.1% Sodium azide
Storage	Store as concentrated solution. Centrifuge briefly prior to opening vial. For short-term storage (1-2 weeks), store at 4°C. For long-term storage, aliquot and store at -20°C or below. Avoid multiple freeze-thaw cycles.
Concentration	1.0 mg/ml (Please refer to the vial label for the specific concentration.)
Immunogen	Synthetic peptide LIQSFKLPEYFSNLTNLEHLDLSSNKIQSIYC corresponding to amino acids 161-192 within the N-terminal region of Human TLR4.
Purification	Purified by affinity chromatography
Conjugation	Unconjugated



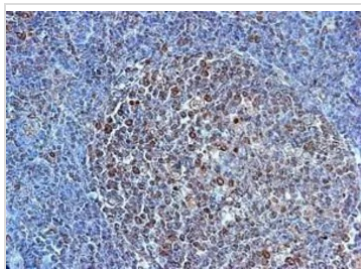
For full product information, images and publications, please visit our [website](#).

For laboratory research use only. Not for any clinical, therapeutic, or diagnostic use in humans or animals. Not for animal or human consumption.

Note

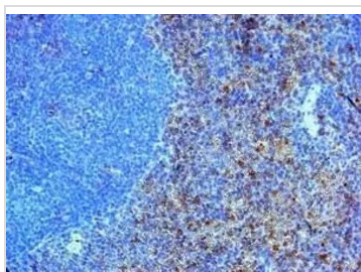
Purchasers shall not, and agree not to enable third parties to, analyze, copy, reverse engineer or otherwise attempt to determine the structure or sequence of the product.

DATA IMAGES



GTX31243 IHC-P Image

IHC-P analysis of human tonsil tissue using GTX31243 TLR4 antibody.



GTX31243 IHC-P Image

IHC-P analysis of mouse spleen tissue using GTX31243 TLR4 antibody.



For full product information, images and publications, please visit our [website](#).