

## TLR3 antibody [11F8]

Cat. No. GTX31247

Host	Rat
Clonality	Monoclonal
Isotype	IgG2a
Applications	ICC/IF, FCM
Reactivity	Mouse

Package  
100 µg

## Applications

## Application Note

\*Optimal dilutions/concentrations should be determined by the researcher.

Suggested dilution	Recommended dilution
ICC/IF	Assay dependent
FCM	1/25-1/200

**Note : Use 10µl of the suggested working dilution to label 10<sup>6</sup> cells in 100µl.**

Not tested in other applications.

## Properties

Form	Liquid
Buffer	PBS
Preservative	0.09% Sodium azide
Storage	Store as concentrated solution. Centrifuge briefly prior to opening vial. For short-term storage (1-2 weeks), store at 4°C. For long-term storage, aliquot and store at -20°C or below. Avoid multiple freeze-thaw cycles.
Concentration	1.0 mg/ml (Please refer to the vial label for the specific concentration.)
Immunogen	Purified murine TLR3 extracellular domain protein.
Purification	Protein G purified From tissue culture supernatant
Conjugation	Unconjugated

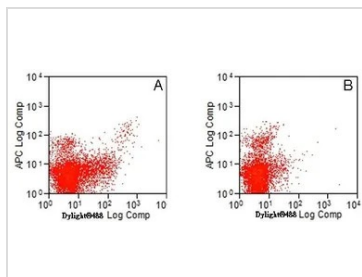
## Note

For laboratory research use only. Not for any clinical, therapeutic, or diagnostic use in humans or animals. Not for animal or human consumption.

Purchasers shall not, and agree not to enable third parties to, analyze, copy, reverse engineer or otherwise attempt to determine the structure or sequence of the product.



For full product information, images and publications, please visit our [website](#).

**DATA IMAGES**

**GTX31247 FCM Image**

Mouse spleen cells stained with Rat anti Mouse CD8 alpha:APC (GTX76346) and (A) Rat anti Mouse TLR3 (GTX31247) or (B) rat IgG control. Detection with Goat anti Rat IgG:DylightR488 was performed following permeabilisation of the cells prior to incubation with Rat anti Mouse TLR3 (GTX31247).



For full product information, images and publications, please visit our [website](#).