

## BAFF Receptor antibody

Cat. No. GTX31252

Host	Rabbit
Clonality	Polyclonal
Isotype	IgG
Applications	WB, IHC-P
Reactivity	Human, Mouse, Rat

Package  
100 µg

## Applications

## Application Note

\*Optimal dilutions/concentrations should be determined by the researcher.

Suggested dilution	Recommended dilution
WB	2-5µg/ml
IHC-P	Assay dependent

**Note : This antibody detects a band approximately 20 kDa in Western blots of human, mouse and rat spleen lysates.**

Not tested in other applications.

Calculated MW 19 kDa. ( [Note](#) )

## Properties

Form	Liquid
Buffer	PBS
Preservative	0.02% Sodium azide
Storage	Store as concentrated solution. Centrifuge briefly prior to opening vial. For short-term storage (1-2 weeks), store at 4°C. For long-term storage, aliquot and store at -20°C or below. Avoid multiple freeze-thaw cycles.
Concentration	1.0 mg/ml (Please refer to the vial label for the specific concentration.)
Immunogen	Synthetic peptide corresponding to a region within the C-terminus of human BAFF Receptor.
Purification	Purified by affinity chromatography
Conjugation	Unconjugated

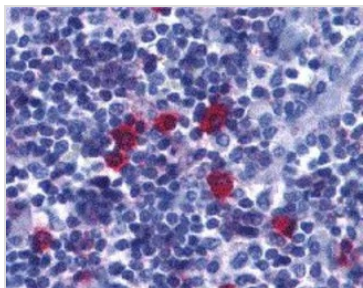
## Note

For laboratory research use only. Not for any clinical, therapeutic, or diagnostic use in humans or animals. Not for animal or human consumption.

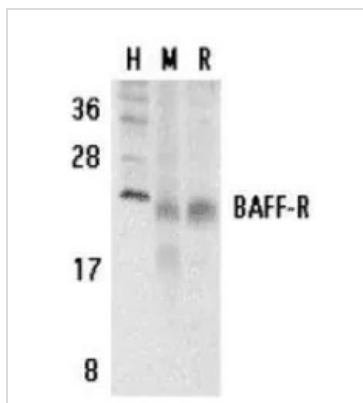
Purchasers shall not, and agree not to enable third parties to, analyze, copy, reverse engineer or otherwise attempt to determine the structure or sequence of the product.



For full product information, images and publications, please visit our [website](#).

**DATA IMAGES**

**GTX31252 IHC-P Image**

IHC analysis of human tonsil tissue using GTX31252 BAFF Receptor antibody.


**GTX31252 WB Image**

WB analysis of human (H), mouse (M) and rat (R) spleen tissue lysates using GTX31252 BAFF Receptor antibody



For full product information, images and publications, please visit our [website](#).