

DcR2 / CD264 antibody

Cat. No. GTX31258

Host	Rabbit
Clonality	Polyclonal
Isotype	IgG
Applications	WB, ICC/IF, IHC-P, ELISA
Reactivity	Human, Mouse, Rat

Package
 100 µg

Applications

Application Note

*Optimal dilutions/concentrations should be determined by the researcher.

Suggested dilution	Recommended dilution
WB	1 µg/mL
ICC/IF	10 µg/mL
IHC-P	2.5 µg/mL
ELISA	Assay dependent

Not tested in other applications.

Calculated MW 42 kDa. ([Note](#))

Properties

Form	Liquid
Buffer	PBS
Preservative	0.02% Sodium azide
Storage	Store as concentrated solution. Centrifuge briefly prior to opening vial. For short-term storage (1-2 weeks), store at 4°C. For long-term storage, aliquot and store at -20°C or below. Avoid multiple freeze-thaw cycles.
Concentration	1 mg/ml (Please refer to the vial label for the specific concentration.)
Immunogen	DcR2 antibody was raised against a 15 amino acid peptide near the center of human DcR2. The immunogen is located within amino acids 230 - 280 of DcR2.
Purification	Purified by antigen-affinity chromatography
Conjugation	Unconjugated



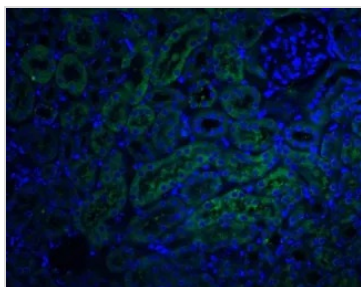
For full product information, images and publications, please visit our [website](#).

For laboratory research use only. Not for any clinical, therapeutic, or diagnostic use in humans or animals. Not for animal or human consumption.

Note

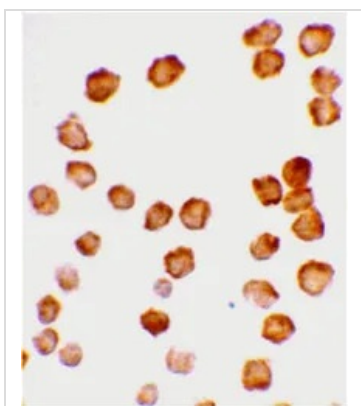
Purchasers shall not, and agree not to enable third parties to, analyze, copy, reverse engineer or otherwise attempt to determine the structure or sequence of the product.

DATA IMAGES

**GTX31258 IHC-P Image**

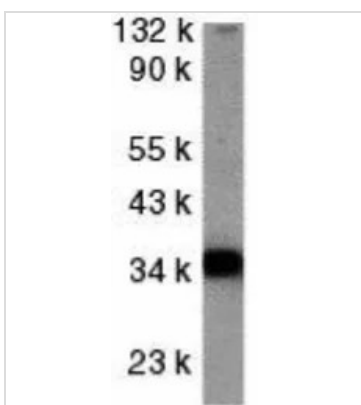
IHC-P analysis of mouse kidney tissue using GTX31258 DcR2 / CD264 antibody.

Working concentration : 20 µg/ml

**GTX31258 ICC/IF Image**

ICC/IF analysis of HeLa cells using GTX31258 DcR2 / CD264 antibody.

Working concentration : 10 µg/ml

**GTX31258 WB Image**

WB analysis of HeLa cell lysate using GTX31258 DcR2 / CD264 antibody.

Working concentration : 1 µg/ml



For full product information, images and publications, please visit our [website](#).