

DFFB antibody

Cat. No. GTX31261

Host	Rabbit
Clonality	Polyclonal
Isotype	IgG
Applications	WB, ICC/IF, ELISA
Reactivity	Human, Mouse, Rat

Package
100 µg

Applications

Application Note

*Optimal dilutions/concentrations should be determined by the researcher.

Suggested dilution	Recommended dilution
WB	0.5 µg/mL
ICC/IF	5 µg/mL
ELISA	Assay dependent

Not tested in other applications.

Calculated MW 39 kDa. ([Note](#))

Properties

Form	Liquid
Buffer	PBS
Preservative	0.02% Sodium azide
Storage	Store as concentrated solution. Centrifuge briefly prior to opening vial. Store at 4°C.
Concentration	1 mg/ml (Please refer to the vial label for the specific concentration.)
Immunogen	DFFB antibody was raised against a peptide corresponding to 18 amino acids near the center of murine CAD. The immunogen is located within amino acids 130 - 180 of DFFB.
Purification	Purified by antigen-affinity chromatography
Conjugation	Unconjugated

Note

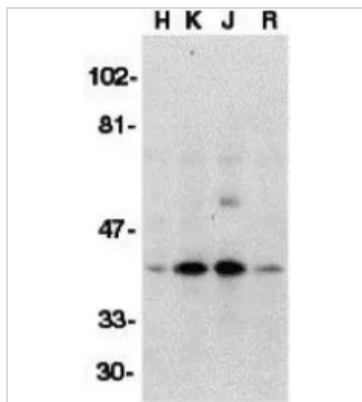
For laboratory research use only. Not for any clinical, therapeutic, or diagnostic use in humans or animals. Not for animal or human consumption.

Purchasers shall not, and agree not to enable third parties to, analyze, copy, reverse engineer or otherwise attempt to determine the structure or sequence of the product.



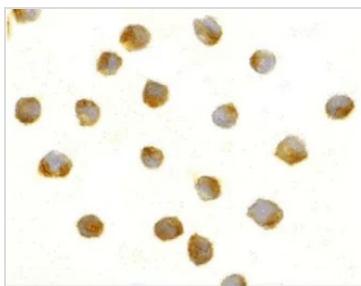
For full product information, images and publications, please visit our [website](#).

DATA IMAGES



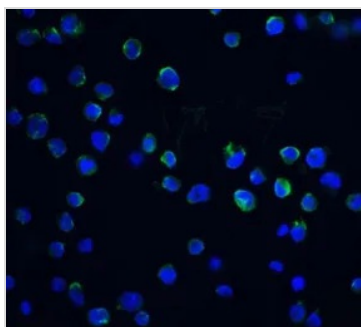
GTX31261 WB Image

WB analysis of HeLa (H), K562 (K), Jurkat (J), and Raji (R) whole cell lysate using GTX31261 DFFB antibody.
Working concentration : 1:500



GTX31261 ICC/IF Image

ICC/IF analysis of Jurkat cells using GTX31261 DFFB antibody.
Working concentration : 5 µg/ml



GTX31261 ICC/IF Image

ICC/IF analysis of K562 cells using GTX31261 DFFB antibody.
Working concentration : 20 µg/ml



For full product information, images and publications, please visit our [website](#).