

DFFB antibody

Cat. No. GTX31262

Host	Rabbit
Clonality	Polyclonal
Isotype	IgG
Applications	WB, ICC/IF, ELISA
Reactivity	Human

Package
100 µg

Applications

Application Note

*Optimal dilutions/concentrations should be determined by the researcher.

Suggested dilution	Recommended dilution
WB	0.5 µg/mL
ICC/IF	5 µg/mL
ELISA	Assay dependent

Not tested in other applications.

Calculated MW 39 kDa. ([Note](#))

Properties

Form	Liquid
Buffer	PBS
Preservative	0.02% Sodium azide
Storage	Store as concentrated solution. Centrifuge briefly prior to opening vial. For short-term storage (1-2 weeks), store at 4°C. For long-term storage, aliquot and store at -20°C or below. Avoid multiple freeze-thaw cycles.
Concentration	Batch dependent (Please refer to the vial label for the specific concentration.)
Immunogen	DFFB antibody was raised against a 16 amino acid peptide near the amino terminus of human DFFB. The immunogen is located within the first 50 amino acids of DFFB.
Purification	Purified by antigen-affinity chromatography
Conjugation	Unconjugated

Note

For laboratory research use only. Not for any clinical, therapeutic, or diagnostic use in humans or animals. Not for animal or human consumption.

Purchasers shall not, and agree not to enable third parties to, analyze, copy, reverse engineer or otherwise attempt to determine the structure or sequence of the product.



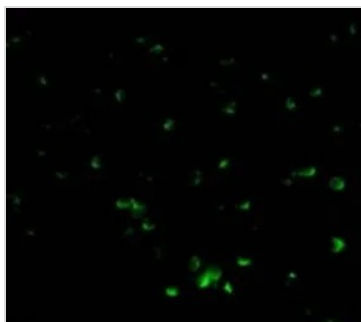
For full product information, images and publications, please visit our [website](#).

DATA IMAGES



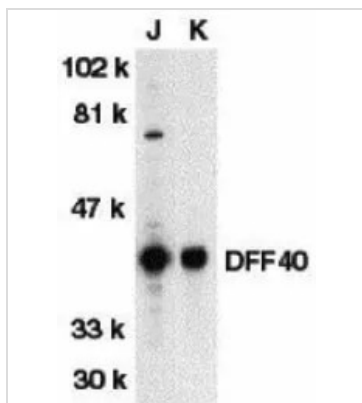
GTX31262 ICC/IF Image

ICC/IF analysis of Jurkat cells using GTX31262 DFFB antibody.
Working concentration : 5 µg/ml



GTX31262 ICC/IF Image

ICC/IF analysis of Jurkat cells using GTX31262 DFFB antibody.
Working concentration : 20 µg/ml



GTX31262 WB Image

WB analysis of Jurkat (J) and K562 (K) whole cell lysates using GTX31262 DFFB antibody.
Working concentration : 1:500



For full product information, images and publications, please visit our [website](https://www.genetex.com).