

TACI antibody

Cat. No. GTX31266

Host	Rabbit
Clonality	Polyclonal
Isotype	IgG
Applications	WB, ICC/IF, ELISA
Reactivity	Human

Package
100 µg

Applications

Application Note

*Optimal dilutions/concentrations should be determined by the researcher.

Suggested dilution	Recommended dilution
WB	5 µg/mL
ICC/IF	2 µg/mL
ELISA	Assay dependent

Not tested in other applications.

Calculated MW 32 kDa. ([Note](#))

Properties

Form	Liquid
Buffer	PBS
Preservative	0.02% Sodium azide
Storage	Store as concentrated solution. Centrifuge briefly prior to opening vial. For short-term storage (1-2 weeks), store at 4°C. For long-term storage, aliquot and store at -20°C or below. Avoid multiple freeze-thaw cycles.
Concentration	Batch dependent (Please refer to the vial label for the specific concentration.)
Immunogen	TACI antibody was raised against a synthetic peptide mapping at the amino terminus of human TACI. The immunogen is located within the first 50 amino acids of TACI.
Purification	Purified by antigen-affinity chromatography
Conjugation	Unconjugated

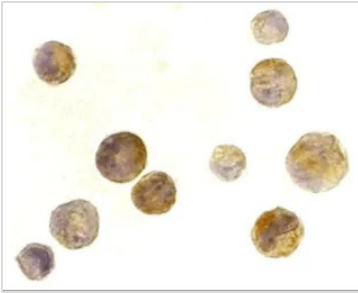
Note For laboratory research use only. Not for any clinical, therapeutic, or diagnostic use in humans or animals. Not for animal or human consumption.

Purchasers shall not, and agree not to enable third parties to, analyze, copy, reverse engineer or otherwise attempt to determine the structure or sequence of the product.

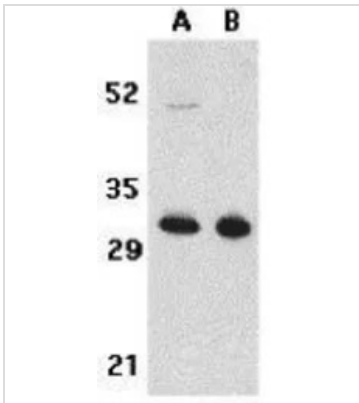


For full product information, images and publications, please visit our [website](#).

DATA IMAGES

**GTX31266 ICC/IF Image**

ICC/IF analysis of K562 cells using GTX31266 TACI antibody.
Working concentration : 2 µg/ml

**GTX31266 WB Image**

WB analysis of K562 (A) and U937 (B) cell lysates using GTX31266 TACI antibody.
Working concentration : 5 µg/ml



For full product information, images and publications, please visit our [website](#).