

## IL21 Receptor antibody

Cat. No. GTX31271

Host	Rabbit
Clonality	Polyclonal
Isotype	IgG
Applications	WB, ICC/IF, ELISA
Reactivity	Human, Mouse, Rat

**Package**  
100 µg

## Applications

## Application Note

\*Optimal dilutions/concentrations should be determined by the researcher.

Suggested dilution	Recommended dilution
WB	1 µg/mL
ICC/IF	20 µg/mL
ELISA	Assay dependent

Not tested in other applications.

**Calculated MW** 59 kDa. ( [Note](#) )

## Properties

Form	Liquid
Buffer	PBS
Preservative	0.02% Sodium azide
Storage	Store as concentrated solution. Centrifuge briefly prior to opening vial. For short-term storage (1-2 weeks), store at 4°C. For long-term storage, aliquot and store at -20°C or below. Avoid multiple freeze-thaw cycles.
Concentration	Batch dependent (Please refer to the vial label for the specific concentration.)
Immunogen	IL-21 receptor antibody was raised against a synthetic peptide corresponding to amino acids 20 to 32 of human IL-21 receptor precursor. The immunogen is located within the first 50 amino acids of IL-21 Receptor.
Purification	Purified by antigen-affinity chromatography
Conjugation	Unconjugated

## Note

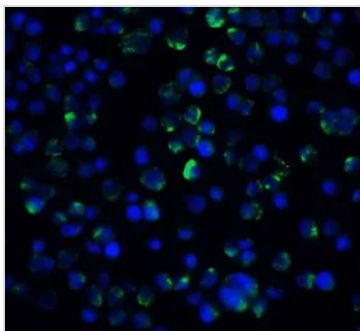
For laboratory research use only. Not for any clinical, therapeutic, or diagnostic use in humans or animals. Not for animal or human consumption.

Purchasers shall not, and agree not to enable third parties to, analyze, copy, reverse engineer or otherwise attempt to determine the structure or sequence of the product.

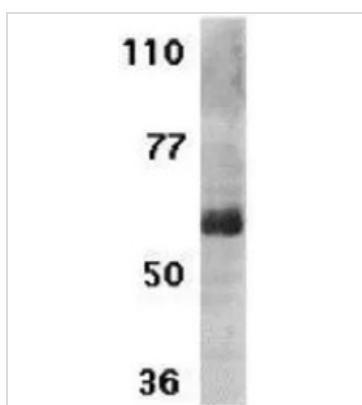


For full product information, images and publications, please visit our [website](#).

Date 2026 / 01 / 08 Page 1 of 2

**DATA IMAGES**

**GTX31271 ICC/IF Image**

ICC/IF analysis of A431 cells using GTX31271 IL21 Receptor antibody.  
Working concentration : 20 µg/ml


**GTX31271 WB Image**

WB analysis of Raji cell lysate using GTX31271 IL21 Receptor antibody.  
Working concentration : 1 µg/ml



For full product information, images and publications, please visit our [website](https://www.genetex.com).