

# Bcl rambo antibody

**Cat. No. GTX31276**

<b>Host</b>	Rabbit
<b>Clonality</b>	Polyclonal
<b>Isotype</b>	IgG
<b>Application</b>	WB, IHC-P, ELISA
<b>Reactivity</b>	Human, Mouse, Rat

**Package**  
100 µg

## APPLICATION

### Application Note

\*Optimal dilutions/concentrations should be determined by the researcher.

Suggested dilution	Recommended dilution
WB	2 - 4 µg/mL
IHC-P	10 µg/mL
ELISA	Assay dependent

Not tested in other applications.

**Calculated MW** 53 kDa. ( [Note](#) )

## PROPERTIES

<b>Form</b>	Liquid
<b>Buffer</b>	PBS
<b>Preservative</b>	0.02% Sodium azide
<b>Storage</b>	Store as concentrated solution. Centrifuge briefly prior to opening vial. For short-term storage (1-2 weeks), store at 4°C. For long-term storage, aliquot and store at -20°C or below. Avoid multiple freeze-thaw cycles.
<b>Concentration</b>	1 mg/ml (Please refer to the vial label for the specific concentration.)
<b>Immunogen</b>	Bcl-rambo antibody was raised against a 15 amino acid synthetic peptide from near the center of human Bcl-rambo. The immunogen is located within amino acids 280 - 330 of Bcl-rambo.
<b>Purification</b>	Purified by antigen-affinity chromatography
<b>Conjugation</b>	Unconjugated

### Note

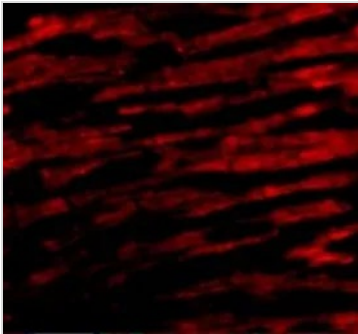
For laboratory research use only. Not for any clinical, therapeutic, or diagnostic use in humans or animals. Not for animal or human consumption.

Purchasers shall not, and agree not to enable third parties to, analyze, copy, reverse engineer or otherwise attempt to determine the structure or sequence of the product.



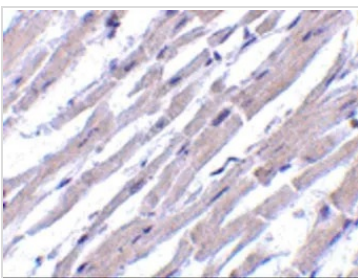
For full product information, images and publications, please visit our [website](#).

## DATA IMAGES



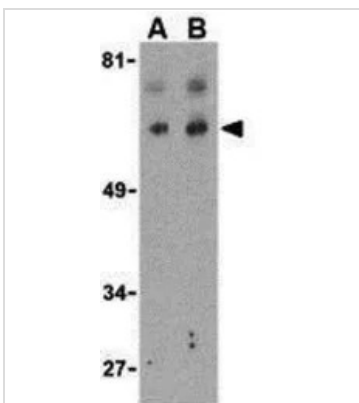
### GTX31276 IHC-P Image

IHC-P analysis of human heart tissue using GTX31276 Bcl rambo antibody.  
Working concentration : 20 µg/ml



### GTX31276 IHC-P Image

IHC-P analysis of human heart tissue using GTX31276 Bcl rambo antibody.  
Working concentration : 10 µg/ml



### GTX31276 WB Image

WB analysis of K562 cell lysate using GTX31276 Bcl rambo antibody.  
Working concentration : (A) 2 and (B) 4 µg/ml



For full product information, images and publications, please visit our [website](https://www.genetex.com).