

## Bcl-G antibody

**Cat. No. GTX31280**

<b>Host</b>	Rabbit
<b>Clonality</b>	Polyclonal
<b>Isotype</b>	IgG
<b>Application</b>	WB, IHC-P, ELISA
<b>Reactivity</b>	Human, Mouse, Rat

**Package**  
100 µg

### APPLICATION

#### Application Note

\*Optimal dilutions/concentrations should be determined by the researcher.

Suggested dilution	Recommended dilution
WB	2.5 - 5 µg/mL
IHC-P	2 µg/mL
ELISA	Assay dependent

Not tested in other applications.

<b>Calculated MW</b>	37 kDa. ( <a href="#">Note</a> )
<b>Product Note</b>	Although antibody should react with both isoforms, only the Bcl-GS protein has been observed

### PROPERTIES

<b>Form</b>	Liquid
<b>Buffer</b>	PBS
<b>Preservative</b>	0.02% Sodium azide
<b>Storage</b>	Store as concentrated solution. Centrifuge briefly prior to opening vial. For short-term storage (1-2 weeks), store at 4°C. For long-term storage, aliquot and store at -20°C or below. Avoid multiple freeze-thaw cycles.
<b>Concentration</b>	1 mg/ml (Please refer to the vial label for the specific concentration.)
<b>Immunogen</b>	Bcl-G antibody was raised against a peptide corresponding to 15 amino acids near the N-terminus of human Bcl-G. The immunogen is located within the first 50 amino acids of Bcl-G.
<b>Purification</b>	Purified by ion exchange chromatography
<b>Conjugation</b>	Unconjugated



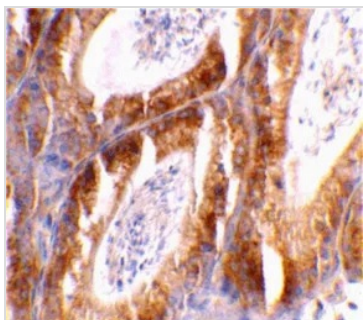
For full product information, images and publications, please visit our [website](#).

For laboratory research use only. Not for any clinical, therapeutic, or diagnostic use in humans or animals. Not for animal or human consumption.

## Note

Purchasers shall not, and agree not to enable third parties to, analyze, copy, reverse engineer or otherwise attempt to determine the structure or sequence of the product.

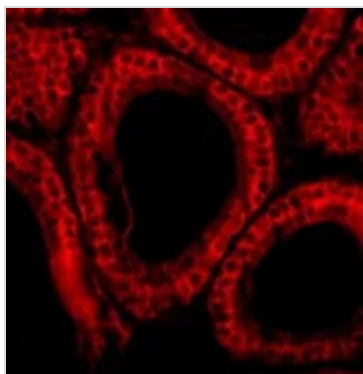
## DATA IMAGES



### GTX31280 IHC-P Image

IHC-P analysis of mouse testis tissue using GTX31280 Bcl-G antibody.

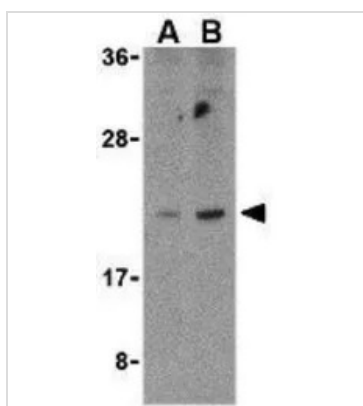
Working concentration : 2 µg/ml



### GTX31280 IHC-P Image

IHC-P analysis of mouse testis tissue using GTX31280 Bcl-G antibody.

Working concentration : 10 µg/ml



### GTX31280 WB Image

WB analysis of U937 cell lysate using GTX31280 Bcl-G antibody.

Working concentration : (A) 2.5 and (B) 5 µg/ml



For full product information, images and publications, please visit our [website](#).