

Caspase 8 antibody

Cat. No. GTX31284

Host	Rabbit
Clonality	Polyclonal
Isotype	IgG
Applications	WB, ICC/IF, IHC-P, ELISA
Reactivity	Human, Mouse, Rat

Package
100 µg

Applications

Application Note

*Optimal dilutions/concentrations should be determined by the researcher.

Suggested dilution	Recommended dilution
WB	0.5 - 2 µg/mL
ICC/IF	2 µg/mL
IHC-P	5 µg/mL
ELISA	Assay dependent

Not tested in other applications.

Calculated MW 55 kDa. ([Note](#))

Product Note Depending on cell lines or tissues used, either full-length or other cleavage products may be observed.

Properties

Form	Liquid
Buffer	PBS
Preservative	0.02% Sodium azide
Storage	Store as concentrated solution. Centrifuge briefly prior to opening vial. For short-term storage (1-2 weeks), store at 4°C. For long-term storage, aliquot and store at -20°C or below. Avoid multiple freeze-thaw cycles.
Concentration	1 mg/ml (Please refer to the vial label for the specific concentration.)
Immunogen	Caspase-8 antibody was raised against a 16 amino acid synthetic peptide from near the carboxy terminus of human Caspase-8 isoform A. The immunogen is located within the last 50 amino acids of Caspase-8.
Purification	Purified by antigen-affinity chromatography
Conjugation	Unconjugated

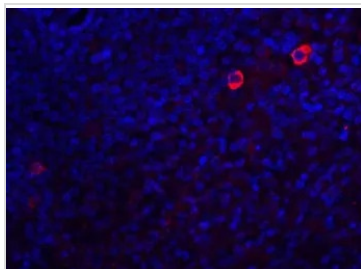


For full product information, images and publications, please visit our [website](#).

For laboratory research use only. Not for any clinical, therapeutic, or diagnostic use in humans or animals. Not for animal or human consumption.

Note

Purchasers shall not, and agree not to enable third parties to, analyze, copy, reverse engineer or otherwise attempt to determine the structure or sequence of the product.

DATA IMAGES

GTX31284 IHC-P Image

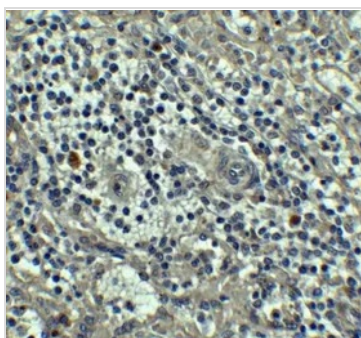
IHC-P analysis of human spleen tissue using GTX31284 Caspase 8 antibody.

Working concentration : 20 µg/ml


GTX31284 ICC/IF Image

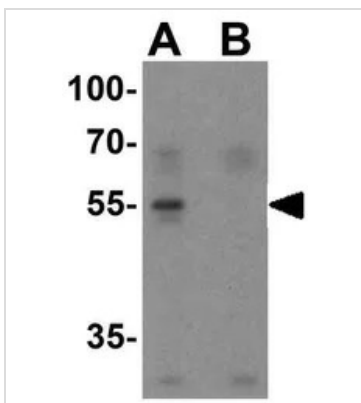
ICC/IF analysis of Jurkat cells using GTX31284 Caspase 8 antibody.

Working concentration : 2 µg/ml


GTX31284 IHC-P Image

IHC-P analysis of human spleen tissue using GTX31284 Caspase 8 antibody.

Working concentration : 5 µg/ml


GTX31284 WB Image

WB analysis of Jurkat cell lysate in (A) the absence and (B) the presence of blocking peptide using GTX31284 Caspase 8 antibody.

Working concentration : 1 µg/ml



For full product information, images and publications, please visit our [website](https://www.genetex.com).