

TLR9 antibody

Cat. No. GTX31295

Host	Rabbit
Clonality	Polyclonal
Isotype	IgG
Applications	WB, ICC/IF, IHC-P, ELISA
Reactivity	Human, Mouse, Rat

References (1)

Package

100 µg

Applications

Application Note

*Optimal dilutions/concentrations should be determined by the researcher.

Suggested dilution	Recommended dilution
WB	1 µg/mL
ICC/IF	2 µg/mL
IHC-P	Assay dependent
ELISA	Assay dependent

Not tested in other applications.

Calculated MW 116 kDa. ([Note](#))

Product Note At least two isoforms of TLR9 are known to exist; this antibody will detect both isoforms. TLR9 antibody is predicted to not cross-react with other TLR proteins.

Properties

Form	Liquid
Buffer	PBS
Preservative	0.02% Sodium azide
Storage	Store as concentrated solution. Centrifuge briefly prior to opening vial. For short-term storage (1-2 weeks), store at 4°C. For long-term storage, aliquot and store at -20°C or below. Avoid multiple freeze-thaw cycles.
Concentration	1 mg/ml (Please refer to the vial label for the specific concentration.)
Immunogen	TLR9 antibody was raised against a peptide corresponding to 15 amino acids near the center of human TLR9. The immunogen is located within amino acids 840 - 890 of TLR9.
Purification	Purified by antigen-affinity chromatography
Conjugation	Unconjugated



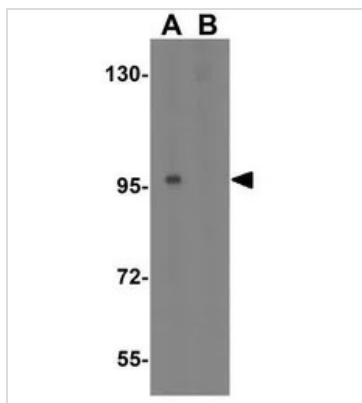
For full product information, images and publications, please visit our [website](#).

For laboratory research use only. Not for any clinical, therapeutic, or diagnostic use in humans or animals. Not for animal or human consumption.

Note

Purchasers shall not, and agree not to enable third parties to, analyze, copy, reverse engineer or otherwise attempt to determine the structure or sequence of the product.

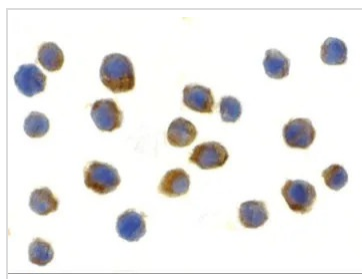
DATA IMAGES



GTx31295 WB Image

WB analysis of Jurkat cell lysate in (A) the absence and (B) the presence of blocking peptide using GTx31295 TLR9 antibody.

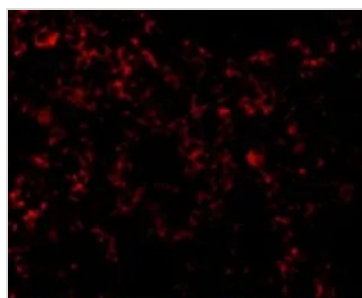
Working concentration : 1 µg/ml



GTx31295 ICC/IF Image

ICC/IF analysis of Jurkat cells using GTx31295 TLR9 antibody.

Working concentration : 2 µg/ml



GTx31295 IHC-P Image

IHC-P analysis of mouse spleen tissue using GTx31295 TLR9 antibody.

Working concentration : 10 µg/ml



For full product information, images and publications, please visit our [website](https://www.genetex.com).