

TIM-4 antibody

Cat. No. GTX31299

Host	Rabbit
Clonality	Polyclonal
Isotype	IgG
Applications	WB, ICC/IF, IHC-P, ELISA
Reactivity	Human, Mouse

Package
100 µg

Applications

Application Note

*Optimal dilutions/concentrations should be determined by the researcher.

Suggested dilution	Recommended dilution
WB	2 µg/mL
ICC/IF	10 µg/mL
IHC-P	2 µg/mL
ELISA	Assay dependent

Not tested in other applications.

Calculated MW 42 kDa. ([Note](#))

Product Note At least four isoforms of TIM-4 are known to exist; this antibody will detect all four isoforms.

Properties

Form	Liquid
Buffer	PBS
Preservative	0.02% Sodium azide
Storage	Store as concentrated solution. Centrifuge briefly prior to opening vial. For short-term storage (1-2 weeks), store at 4°C. For long-term storage, aliquot and store at -20°C or below. Avoid multiple freeze-thaw cycles.
Concentration	1 mg/ml (Please refer to the vial label for the specific concentration.)
Immunogen	TIM-4 antibody was raised against a 16 amino acid synthetic peptide from near the center of human TIM-4. The immunogen is located within amino acids 60 - 110 of TIM-4.
Purification	Purified by antigen-affinity chromatography
Conjugation	Unconjugated



For full product information, images and publications, please visit our [website](#).

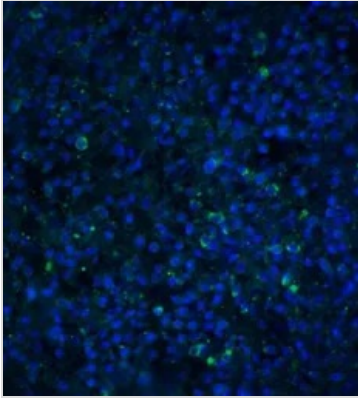
Date 2025 / 12 / 27 Page 1 of 2

For laboratory research use only. Not for any clinical, therapeutic, or diagnostic use in humans or animals. Not for animal or human consumption.

Note

Purchasers shall not, and agree not to enable third parties to, analyze, copy, reverse engineer or otherwise attempt to determine the structure or sequence of the product.

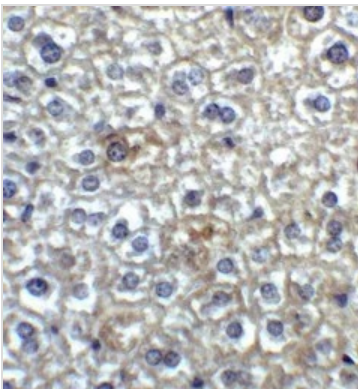
DATA IMAGES



GTX31299 IHC-P Image

IHC-P analysis of human spleen tissue using GTX31299 TIM-4 antibody.

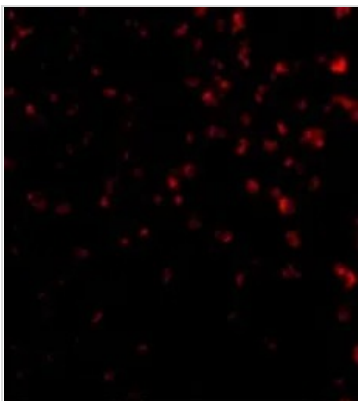
Working concentration : 20 µg/ml



GTX31299 IHC-P Image

IHC-P analysis of mouse liver tissue using GTX31299 TIM-4 antibody.

Working concentration : 2 µg/ml



GTX31299 ICC/IF Image

ICC/IF analysis of Jurkat cells using GTX31299 TIM-4 antibody.

Working concentration : 20 µg/ml



For full product information, images and publications, please visit our [website](#).