

PD-L1 antibody

Cat. No. GTX31308

Host	Rabbit
Clonality	Polyclonal
Isotype	IgG
Application	WB, IHC-P, FACS, ELISA, IHC
Reactivity	Human, Mouse, Rat

Reference (7)

★★★★★ Review (1)

Package
100 µg

APPLICATION

Application Note

*Optimal dilutions/concentrations should be determined by the researcher.

Suggested dilution	Recommended dilution
WB	0.5 - 1 µg/mL
IHC-P	2.5 µg/mL
FACS	0.5 µg/ml
ELISA	Assay dependent
IHC	Assay dependent

Not tested in other applications.

Calculated MW 33 kDa. ([Note](#))

Product Note PD-L1 antibody has no cross-reactivity to PD-L2.

PROPERTIES

Form	Liquid
Buffer	PBS
Preservative	0.02% Sodium azide
Storage	Store as concentrated solution. Centrifuge briefly prior to opening vial. For short-term storage (1-2 weeks), store at 4°C. For long-term storage, aliquot and store at -20°C or below. Avoid multiple freeze-thaw cycles.
Concentration	1 mg/ml (Please refer to the vial label for the specific concentration.)
Immunogen	PD-L1 antibody was raised against a 17 amino acid synthetic peptide from near the center of human PD-L1. The immunogen is located within amino acids 60 - 110 of PD-L1 (Accession number: NP_054862).
Purification	Purified by antigen-affinity chromatography
Conjugation	Unconjugated



For full product information, images and publications, please visit our [website](#).

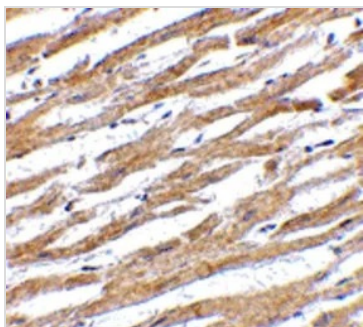
Date 2024 / 05 / 07 Page 1 of 2

For laboratory research use only. Not for any clinical, therapeutic, or diagnostic use in humans or animals. Not for animal or human consumption.

Note

Purchasers shall not, and agree not to enable third parties to, analyze, copy, reverse engineer or otherwise attempt to determine the structure or sequence of the product.

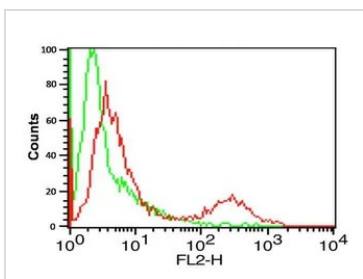
DATA IMAGES



GTX31308 IHC-P Image

IHC-P analysis of human heart tissue using GTX31308 PD-L1 antibody.

Working concentration : 2.5 µg/ml



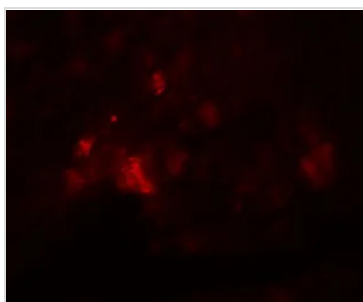
GTX31308 FACS Image

FACS analysis of A-20 cells using GTX31308 PD-L1 antibody.

Working concentration : 0.5 µg/ml

Green: Isotype control

Red : PD-L1 antibody

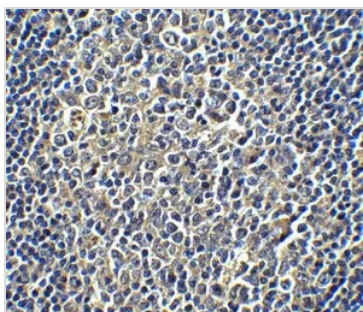


GTX31308 IHC-P Image

IHC-P analysis of rat heart tissue using GTX31308 PD-L1 antibody.

Red : Primary antibody

Dilution : 1:250



GTX31308 IHC-P Image

IHC-P analysis of human tonsil tissue using GTX31308 PD-L1 antibody.

Working concentration : 5 µg/ml



For full product information, images and publications, please visit our [website](https://www.genetex.com).