

# Presenilin 1 antibody

**Cat. No. GTX31313**

<b>Host</b>	Rabbit
<b>Clonality</b>	Polyclonal
<b>Isotype</b>	IgG
<b>Applications</b>	WB, IHC-P, ELISA
<b>Reactivity</b>	Human, Mouse, Rat

**Package**  
100 µg

## Applications

### Application Note

\*Optimal dilutions/concentrations should be determined by the researcher.

Suggested dilution	Recommended dilution
WB	0.5 - 2 µg/mL
IHC-P	2.5 µg/mL
ELISA	Assay dependent

Not tested in other applications.

**Calculated MW** 53 kDa. ( [Note](#) )

## Properties

<b>Form</b>	Liquid
<b>Buffer</b>	PBS
<b>Preservative</b>	0.02% Sodium azide
<b>Storage</b>	Store as concentrated solution. Centrifuge briefly prior to opening vial. For short-term storage (1-2 weeks), store at 4°C. For long-term storage, aliquot and store at -20°C or below. Avoid multiple freeze-thaw cycles.
<b>Concentration</b>	1 mg/ml (Please refer to the vial label for the specific concentration.)
<b>Immunogen</b>	Presenilin1 antibody was raised against a 23 amino acid synthetic peptide from near the carboxy terminus of human presenilin1. The immunogen is located within amino acids 330 - 380 of Presenilin1.
<b>Purification</b>	Purified by antigen-affinity chromatography
<b>Conjugation</b>	Unconjugated

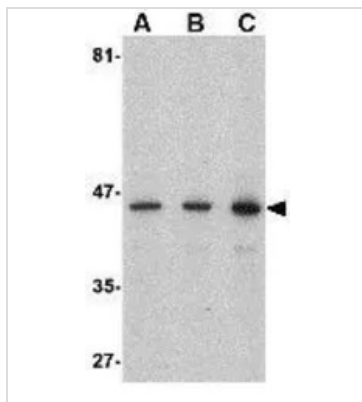
### Note

For laboratory research use only. Not for any clinical, therapeutic, or diagnostic use in humans or animals. Not for animal or human consumption.

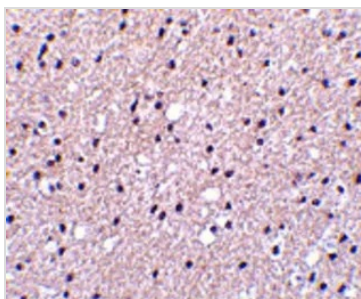
Purchasers shall not, and agree not to enable third parties to, analyze, copy, reverse engineer or otherwise attempt to determine the structure or sequence of the product.



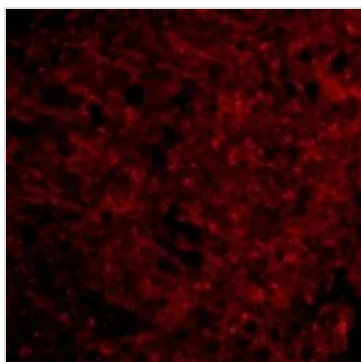
For full product information, images and publications, please visit our [website](#).

**DATA IMAGES**

**GTX31313 WB Image**

WB analysis of human brain tissue lysate using GTX31313 Presenilin 1 antibody.  
Working concentration : (A) 0.5, (B) 1, and (C) 2  $\mu$ g/ml


**GTX31313 IHC-P Image**

IHC-P analysis of human brain tissue using GTX31313 Presenilin 1 antibody.  
Working concentration : 2.5  $\mu$ g/ml


**GTX31313 IHC-P Image**

IHC-P analysis of human brain tissue using GTX31313 Presenilin 1 antibody.  
Working concentration : 20  $\mu$ g/ml



For full product information, images and publications, please visit our [website](https://www.genetex.com).