

RIMS3 antibody

Cat. No. GTX31334

Host	Rabbit
Clonality	Polyclonal
Isotype	IgG
Applications	WB, IHC-P, ELISA
Reactivity	Human, Mouse

Package
100 µg

Applications

Application Note

*Optimal dilutions/concentrations should be determined by the researcher.

Suggested dilution	Recommended dilution
WB	1 µg/mL
IHC-P	2.5 µg/mL
ELISA	Assay dependent

Not tested in other applications.

Calculated MW	33 kDa. (Note)
Product Note	This antibody is predicted to have no cross-reactivity to other Rim proteins.

Properties

Form	Liquid
Buffer	PBS
Preservative	0.02% Sodium azide
Storage	Store as concentrated solution. Centrifuge briefly prior to opening vial. For short-term storage (1-2 weeks), store at 4°C. For long-term storage, aliquot and store at -20°C or below. Avoid multiple freeze-thaw cycles.
Concentration	1 mg/ml (Please refer to the vial label for the specific concentration.)
Immunogen	Rim3 antibody was raised against a 17 amino acid synthetic peptide from near the amino terminus of human Rim3. The immunogen is located within amino acids 60 - 110 of Rim3.
Purification	Purified by antigen-affinity chromatography
Conjugation	Unconjugated



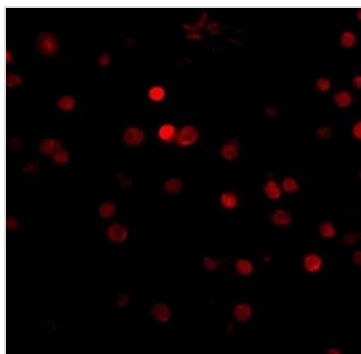
For full product information, images and publications, please visit our [website](#).

For laboratory research use only. Not for any clinical, therapeutic, or diagnostic use in humans or animals. Not for animal or human consumption.

Note

Purchasers shall not, and agree not to enable third parties to, analyze, copy, reverse engineer or otherwise attempt to determine the structure or sequence of the product.

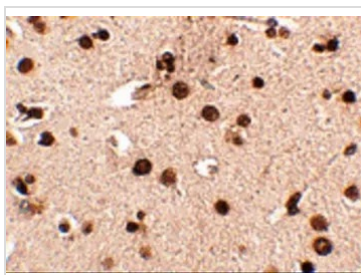
DATA IMAGES



GTx31334 IHC-P Image

IHC-P analysis of human brain tissue using GTx31334 RIMS3 antibody.

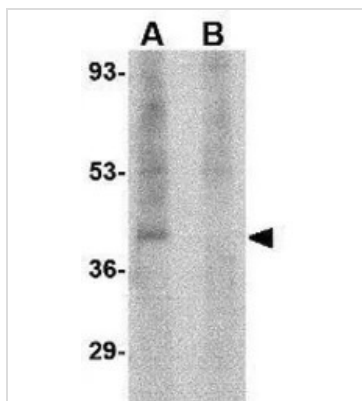
Working concentration : 5 µg/ml



GTx31334 IHC-P Image

IHC-P analysis of human brain tissue using GTx31334 RIMS3 antibody.

Working concentration : 2.5 µg/ml



GTx31334 WB Image

WB analysis of human brain tissue lysate in the (A) absence and (B) presence of blocking peptide using GTx31334 RIMS3 antibody.

Working concentration : 1 µg/ml



For full product information, images and publications, please visit our [website](#).