

Wnt10a antibody

Cat. No. GTX31345

Host	Rabbit
Clonality	Polyclonal
Isotype	IgG
Applications	WB, IHC-P, ELISA
Reactivity	Human, Mouse, Rat

Package
100 µg

Applications

Application Note

*Optimal dilutions/concentrations should be determined by the researcher.

Suggested dilution	Recommended dilution
WB	1 - 2 µg/mL
IHC-P	5 µg/mL
ELISA	Assay dependent

Not tested in other applications.

Calculated MW 46 kDa. ([Note](#))**Product Note** This Wnt10a antibody is predicted to not cross-react with Wnt10b.

Properties

Form	Liquid
Buffer	PBS
Preservative	0.02% Sodium azide
Storage	Store as concentrated solution. Centrifuge briefly prior to opening vial. Store at 4°C.
Concentration	1 mg/ml (Please refer to the vial label for the specific concentration.)
Immunogen	Wnt10a antibody was raised against a 14 amino acid synthetic peptide from near the carboxy terminus of human Wnt10a. The immunogen is located within amino acids 300 - 350 of Wnt10a.
Purification	Purified by antigen-affinity chromatography
Conjugation	Unconjugated



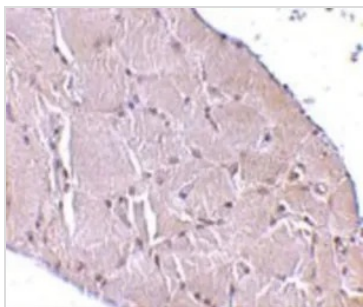
For full product information, images and publications, please visit our [website](#).

For laboratory research use only. Not for any clinical, therapeutic, or diagnostic use in humans or animals. Not for animal or human consumption.

Note

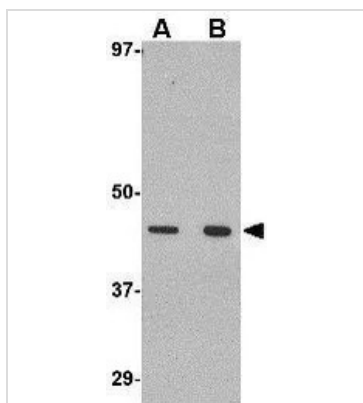
Purchasers shall not, and agree not to enable third parties to, analyze, copy, reverse engineer or otherwise attempt to determine the structure or sequence of the product.

DATA IMAGES

**GTX31345 IHC-P Image**

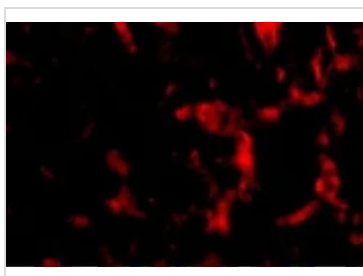
IHC-P analysis of human skeletal muscle tissue using GTX31345 WNT10A antibody.

Working concentration : 10 µg/ml

**GTX31345 WB Image**

WB analysis of RAW264.7 cell lysate using GTX31345 WNT10A antibody.

Working concentration : (A) 1 and (B) 2 µg/ml

**GTX31345 IHC-P Image**

IHC-P analysis of human skeletal muscle tissue using GTX31345 WNT10A antibody.

Working concentration : 20 µg/ml



For full product information, images and publications, please visit our [website](#).