

ATG5 antibody

Cat. No. GTX31372

Host	Chicken
Clonality	Polyclonal
Isotype	IgY
Application	WB, IHC-P, ELISA
Reactivity	Human, Mouse

Reference (1)

Package

100 µg

APPLICATION

Application Note

*Optimal dilutions/concentrations should be determined by the researcher.

Suggested dilution	Recommended dilution
WB	1 - 2 µg/mL
IHC-P	2.5 µg/mL
ELISA	Assay dependent

Not tested in other applications.

Calculated MW 32 kDa. ([Note](#))

Product Note Three isoforms of ATG5 are known to exist; this ATG5 antibody will only detect the longest isoform.

PROPERTIES

Form	Liquid
Buffer	PBS
Preservative	0.02% Sodium azide
Storage	Store as concentrated solution. Centrifuge briefly prior to opening vial. For short-term storage (1-2 weeks), store at 4°C. For long-term storage, aliquot and store at -20°C or below. Avoid multiple freeze-thaw cycles.
Concentration	1 mg/ml (Please refer to the vial label for the specific concentration.)
Immunogen	ATG5 antibody was raised against a 16 amino acid synthetic peptide from near the amino terminus of human ATG5. The immunogen is located within the first 50 amino acids of ATG5.
Purification	Purified by antigen-affinity chromatography
Conjugation	Unconjugated

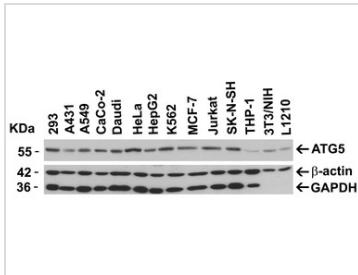


For full product information, images and publications, please visit our [website](#).

For laboratory research use only. Not for any clinical, therapeutic, or diagnostic use in humans or animals. Not for animal or human consumption.

Note

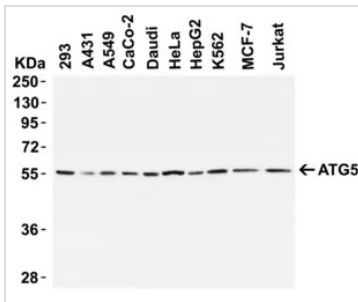
Purchasers shall not, and agree not to enable third parties to, analyze, copy, reverse engineer or otherwise attempt to determine the structure or sequence of the product.

DATA IMAGES

GTX31372 WB Image

WB analysis of various sample lysates using GTX31372 ATG5 antibody.

Loading : 15 μ g of lysates per lane

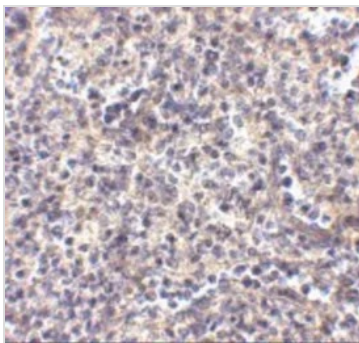
Dilution : 2 μ g/ml


GTX31372 WB Image

WB analysis of various sample lysates using GTX31372 ATG5 antibody.

Loading : 15 μ g of lysates per lane

Dilution : 2 μ g/ml


GTX31372 IHC-P Image

IHC-P analysis of human spleen tissue using GTX31372 ATG5 antibody.

Working concentration : 2.5 μ g/ml



For full product information, images and publications, please visit our [website](https://www.genetex.com).