

# SCF antibody

**Cat. No. GTX31379**

|                    |                   |
|--------------------|-------------------|
| <b>Host</b>        | Rabbit            |
| <b>Clonality</b>   | Polyclonal        |
| <b>Isotype</b>     | IgG               |
| <b>Application</b> | WB, IHC-P, ELISA  |
| <b>Reactivity</b>  | Human, Mouse, Rat |

Reference ( 1 )  
Package  
100 µg

## APPLICATION

### Application Note

\*Optimal dilutions/concentrations should be determined by the researcher.

| Suggested dilution | Recommended dilution |
|--------------------|----------------------|
| WB                 | 1 - 2 µg/mL          |
| IHC-P              | 2.5 µg/mL            |
| ELISA              | Assay dependent      |

Not tested in other applications.

**Calculated MW** 31 kDa. ( [Note](#) )

## PROPERTIES

|                      |  |
|----------------------|--|
| <b>Form</b>          | Liquid   |
| <b>Buffer</b>        | PBS  |
| <b>Preservative</b>  | 0.02% Sodium azide   |
| <b>Storage</b>       | Store as concentrated solution. Centrifuge briefly prior to opening vial. For short-term storage (1-2 weeks), store at 4°C. For long-term storage, aliquot and store at -20°C or below. Avoid multiple freeze-thaw cycles. |
| <b>Concentration</b> | 1 mg/ml (Please refer to the vial label for the specific concentration.)   |
| <b>Immunogen</b>     | SCF antibody was raised against an 18 amino acid synthetic peptide from near the center of human SCF. The immunogen is located within amino acids 100 - 150 of SCF.  |
| <b>Purification</b>  | Purified by antigen-affinity chromatography  |
| <b>Conjugation</b>   | Unconjugated   |

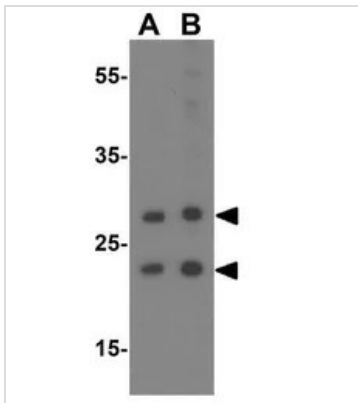
**Note** For laboratory research use only. Not for any clinical, therapeutic, or diagnostic use in humans or animals. Not for animal or human consumption.

Purchasers shall not, and agree not to enable third parties to, analyze, copy, reverse engineer or otherwise attempt to determine the structure or sequence of the product.



For full product information, images and publications, please visit our [website](#).

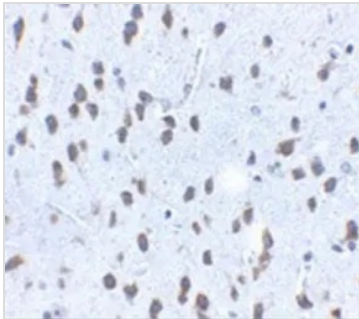
## DATA IMAGES



### GTX31379 WB Image

WB analysis of A431 cell lysate using GTX31379 SCF antibody.

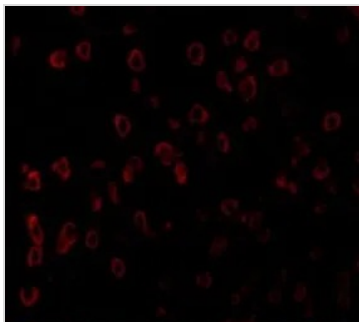
Working concentration : (A) 1 and (B) 2  $\mu$ g/ml



### GTX31379 IHC-P Image

IHC-P analysis of mouse brain tissue using GTX31379 SCF antibody.

Working concentration : 2.5  $\mu$ g/ml



### GTX31379 IHC-P Image

IHC-P analysis of human brain tissue using GTX31379 SCF antibody.

Working concentration : 20  $\mu$ g/ml



For full product information, images and publications, please visit our [website](https://www.genetex.com).